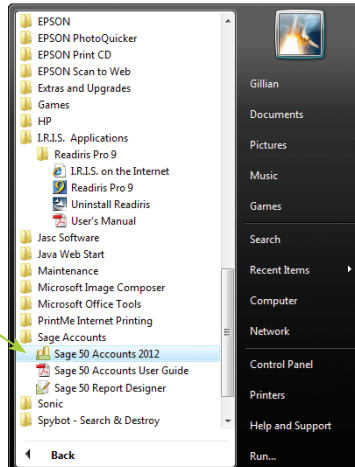


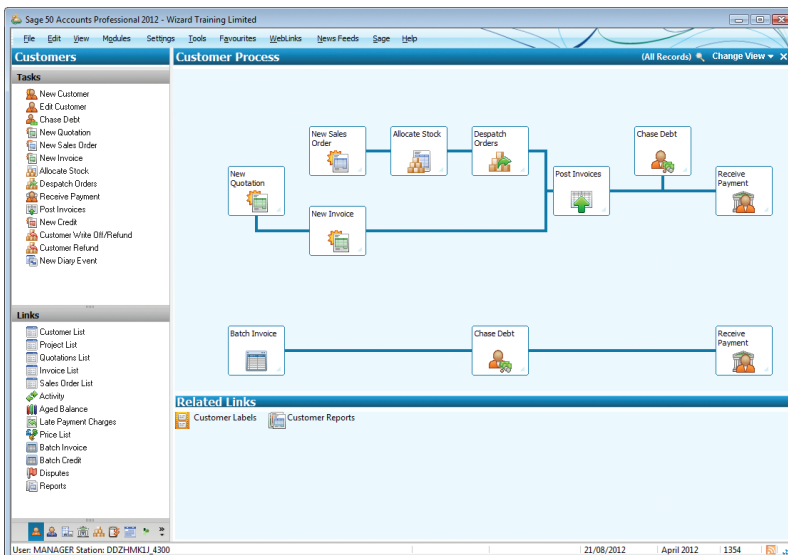
# Starting Sage 50

Turn on your computer and wait for the Windows Desktop to appear. To start your Sage 50 program do the following:

- 1 Click on the Windows Start button.
- 2 Click on All Programs – a selection appears
- 3 Click on the Sage Accounts folder
- 4 Click on Sage 50 Accounts 2012



- 5 The Sage 50 desktop appears



Hot tip



Alternatively, if a shortcut has been set up on the Windows desktop, you can open Sage 50 by double-clicking on the shortcut icon:



Beware



Remember that your reporting will not be accurate until all your opening balances have been entered. Ask your accountant for these, if possible before you start using Sage 50.

Hot tip



You can create multiple delivery addresses so that you can have goods delivered to a number of customer sites whilst specifying a different invoice address.