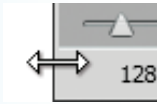


Hot tip

Control the size of the Mini Bridge window by placing your cursor on the left, right or bottom edge of the floating panel. Drag when you see the bidirectional resize arrow. By changing the size of the panel you can arrange the Content Pod to the right of the Navigator Pod or below it.

**Hot tip**

Use the pop-up menus in the Content Bar to select, sort and filter the contents of the Content Pod as you can in Adobe Bridge (see pages 17–19):

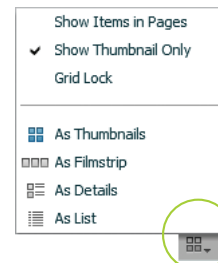
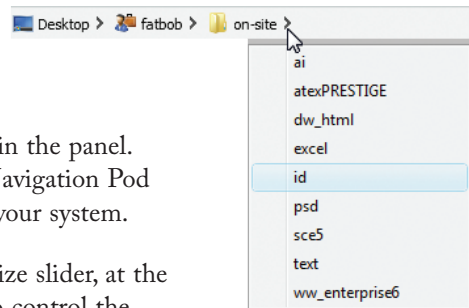
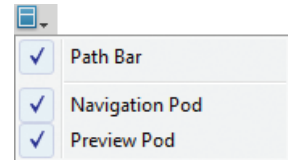
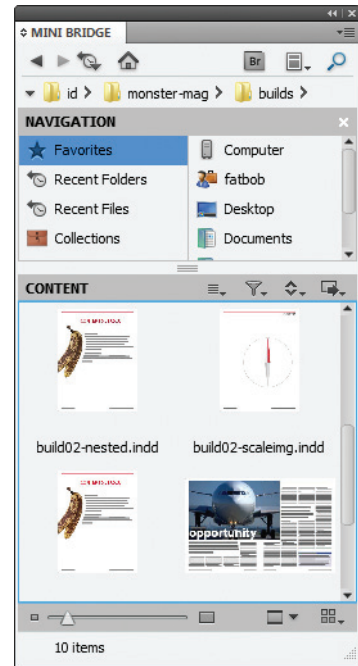
**Hot tip**

Click once on an image or pdf thumbnail to select it, then press the Spacebar to show a full screen preview of the file. Press the Spacebar again to hide the preview.

Mini Bridge

Mini Bridge provides a similar range of functionality to Adobe Bridge, but from within the InDesign working environment. Choose **Window>Mini Bridge** to show the panel.

- 1 Click the Browse Files button to begin using Mini Bridge. Clicking the Browse Files button also launches Bridge in the background as Mini Bridge operations rely on Bridge to carry out tasks.
- 2 Use the Panel View pop-up menu to control the visibility of the Path Bar and the Navigation and Preview Pods.
- 3 Use the Path Bar to navigate to folders containing files that you want to view in the panel. You can also use the Navigation Pod to move to folders on your system.
- 4 Drag the Thumbnail Size slider, at the bottom of the panel, to control the size of thumbnail previews in the Content Pod.
- 5 Click the View button at the bottom of the panel to specify the arrangement and appearance of file thumbnails.



...cont'd

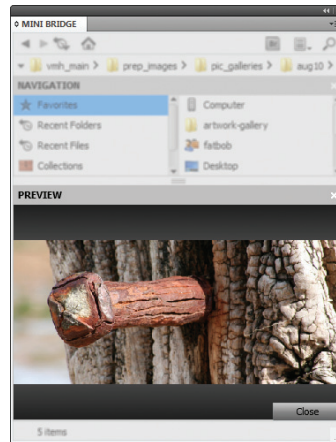
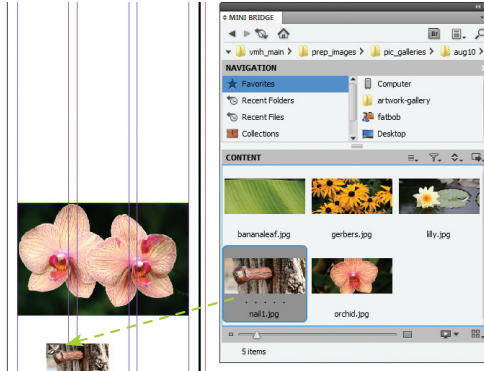
6 To open an InDesign document from Mini Bridge double-click the thumbnail icon.

7 To place an image into the currently active InDesign document drag an image thumbnail onto the InDesign page. When you release the mouse button the Loaded Graphics cursor

appears. You can now place the image (see page 88 for further information on placing images). When you place an image from Mini Bridge, InDesign forms a link to the image as it does when you use the File>Place command.

8 To see a larger preview for a selected image thumbnail in the Preview Pod, hold down Shift then press the Spacebar. Click the Close button to return to thumbnails view.

9 To see a full screen preview of a selected image, press the Spacebar. Press the Spacebar again to return to InDesign.




Beware



If you double-click an image thumbnail in Mini Bridge the image opens in Photoshop.


Hot tip



You can also use the Tools button () in the Content bar to place the selected thumbnail. Click the Tools button, then select Place>In InDesign.

Hot tip



To see a full screen slideshow of all images in the Preview Pod, make sure that none of the images are selected. Click the Slideshow button (). Whilst the slideshow is running, press H on the keyboard to display on-screen commands for controlling the slideshow.