

About Elements

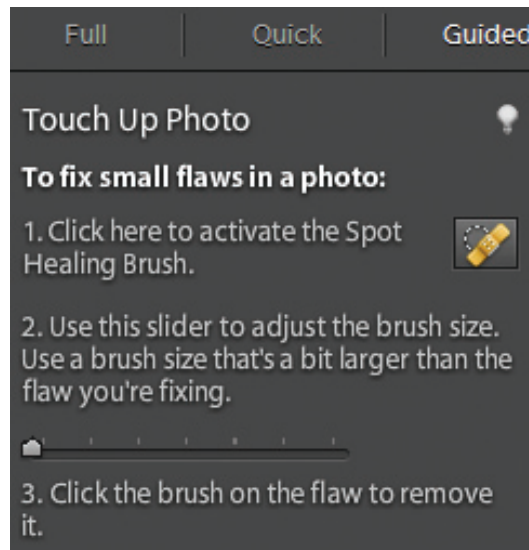
Photoshop Elements is the offspring of the professional-level image editing program, Photoshop. Photoshop is somewhat unusual in the world of computer software, in that it is widely accepted as being the best program of its type on the market. If professional designers or photographers are using an image editing program, it will almost certainly be Photoshop. However, two of the potential drawbacks to Photoshop are the cost (approximately \$700) and its complexity. This is where Elements comes into its own. Adobe (the makers of Photoshop and Elements) have recognized that the majority of digital imaging users (i.e. the consumer market) want something with the basic power of Photoshop, but with enough user-friendly features to make it easy to use. With the explosion in the digital camera market, a product was needed to meet the needs of a new generation of image editors – and that product is Elements.

Don't forget



Photoshop Elements can be bought online from Adobe and computer and software sites, or at computer software stores. There are Windows and Mac versions of the program.

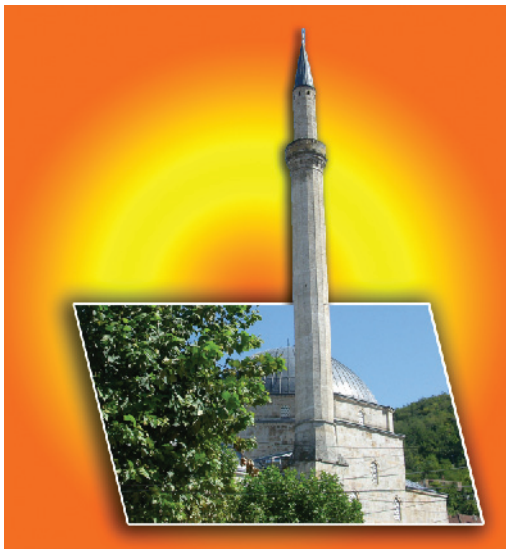
Elements contains the same powerful editing/color management tools as the full version of Photoshop and it also includes a number of versatile features for sharing images and for creating artistic projects, such as slide shows, cards, calendars and online photo albums. It also has valuable help features, such as the Guided Edit mode, which explains what different items can be used for and gives a step-by-step guide to various digital editing techniques:



...cont'd

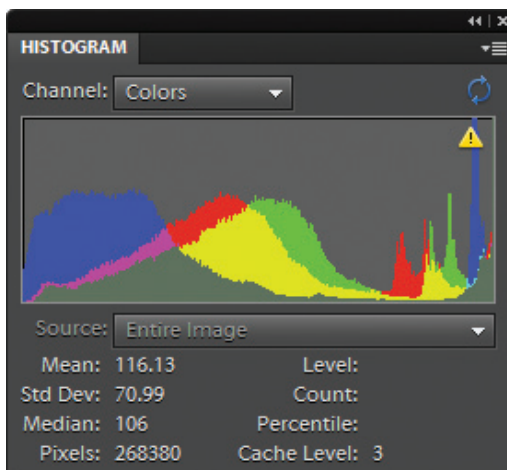
Special effects

One of the great things about using Elements with digital images is that it provides numerous fun and creative options for turning mediocre images into eye-catching works of art. This is achieved through a wide variety of guided activities within Guided Edit:



Advanced features

In addition to user-friendly features, Elements also has more advanced functions, such as the histogram:



Don't forget



The histogram displays the tonal range of the colors in an image.