

Accessibility

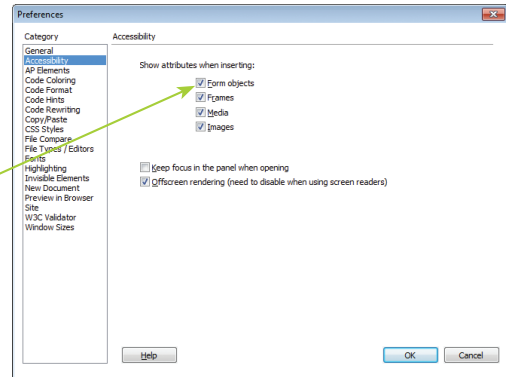
Accessibility options

An increasingly important issue for websites, and web designers, is the one of accessibility. This concerns the use of the Web by blind or partially sighted users. Despite the visual nature of the Web, this group of users can still access the information by using a technology that reads the content on screen. This means that someone who is blind, or partially sighted, is provided with an audio version of websites, rather than just a visual one.

Dreamweaver CS6 enables you to add accessibility features to web pages, as they are being created. To do this:

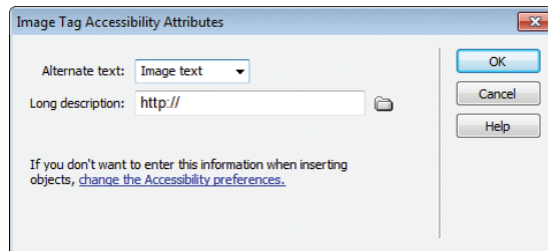
1 Select Edit, Preferences (Windows), Dreamweaver, Preferences (Mac) from the menu bar and click Accessibility

2 Check the items that you want to have accessibility features applied to



3 Click OK

4 Whenever one of the elements checked above is added to a web page, a dialog box appears where you can add in the appropriate accessibility features



Don't forget



The accessibility guidelines used by Dreamweaver CS6 are based on those contained in Section 508 of the USA's 1998 Rehabilitation Act.

Don't forget



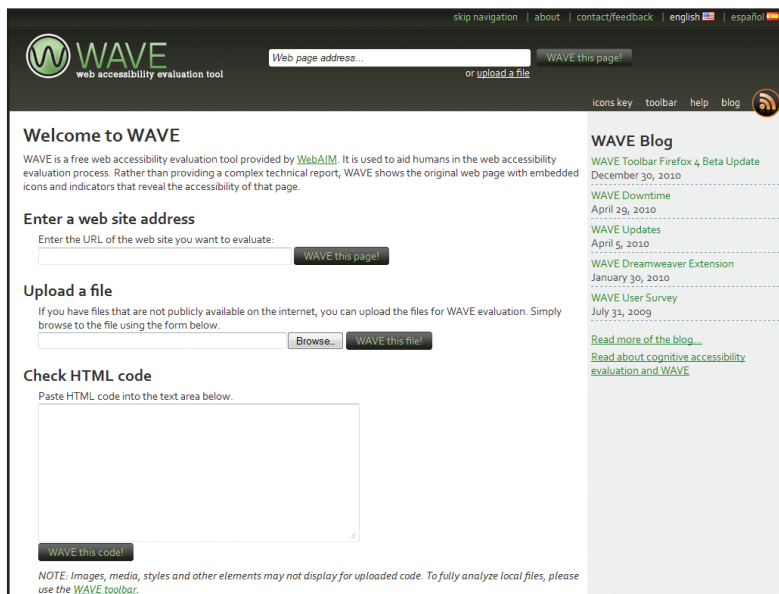
Two websites to look at, for more information about accessibility issues, are the Section 508 site at www.section508.gov, and the Web Accessibility Initiative (WAI) at www.w3.org/wai.

...cont'd

Checking accessibility

Dreamweaver no longer has its own accessibility checker, as it did in previous versions. However, there are websites that can be used to check the accessibility of your sites. One of these is WAVE, which can be accessed at <http://wave.webaim.org/>. To use this:

- 1 Enter the web address (URL) into the web site address box, and click on the WAVE this page! button to check the site



- 2 Browse to a file and enter it into the Upload a File box. Click on the WAVE this file! button, to check the file
- 3 Copy specific HTML code and paste it into the Check HTML Code box. Click on the WAVE this code! button to check the code