

Preferences

Dreamweaver offers extensive options for the way the program looks and operates. These are located via the Preferences window. The preferences can be used to change the way the program and its elements appear, and also to change the way certain tasks are performed. There are 19 categories of preferences, and each category has several options. The Preferences options can be accessed by selecting Edit, Preferences (Windows) or Dreamweaver, Preferences (Mac), from the menu bar. Once the Preferences window has been accessed, it can be used to customize numerous elements of the program:

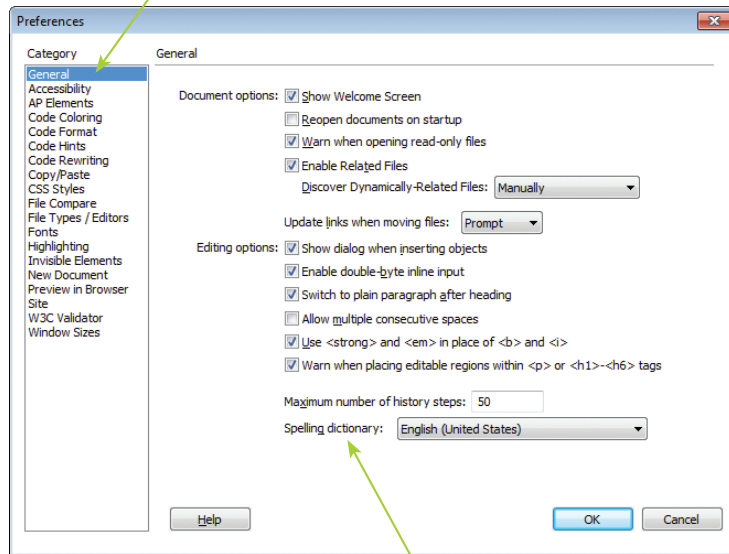
Don't forget



Take some time to look at the available preferences. Although you will not use all of them at this point, it is a good way to get a feel for the type of things you can change within the program.

1

Click here to select a category of preferences



2

Select category options here, and click OK to apply them