

Installing Abyss Web Server

Abyss X1 is a free compact web server available for Windows, Mac OS X, and Linux operating systems available for download at aprelium.com. Despite its small footprint, Abyss supports many powerful features including dynamic content generation with server-side scripts – so is an ideal companion for PHP & MySQL.

The Abyss Web Server can be installed on your own computer to provide an environment for PHP & MySQL website development.



Further guidance on installation of the Abyss Web Server is available at aprelium.com/abyssws/start.html.

Don't forget



The Abyss setup package for Windows is an executable file named **abwsx1.exe** that you run to install the web server.

- 1 Download the Abyss X1 Web Server setup package for your system from aprelium.com/abyssws/downloads.php

Download the Personal Edition (Free - No expiration)

The latest version is **Abyss Web Server X1 (version 2.8)**



[Download Abyss Web Server X1 for Windows \(1987 KB\)](#)
(The setup package contains both 32-bit and 64-bit editions.)

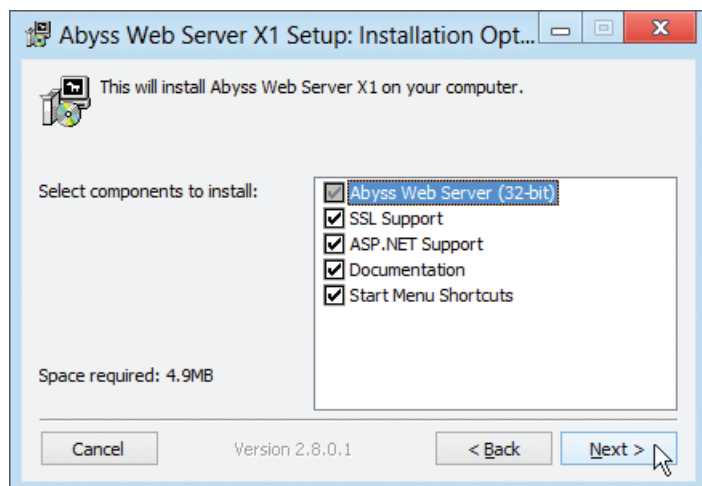


[Download Abyss Web Server X1 for Mac OS X \(1838 KB\)](#)
(Universal Binary)



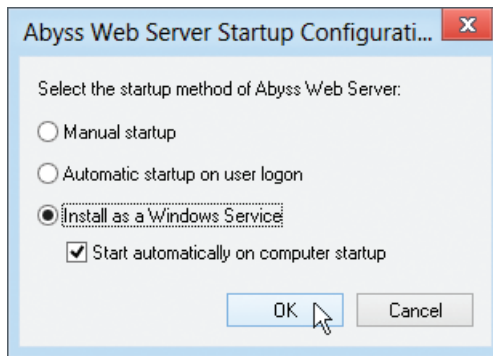
[Download Abyss Web Server X1 for Linux \(1788 KB\)](#)
(The setup package contains both 32-bit and 64-bit editions.)

- 2 Run the setup installer and accept the License terms, then choose to install with all suggested options



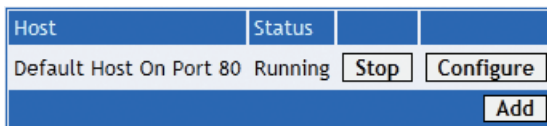
...cont'd

- 3 Accept the suggested location of **C:\Abyss Web Server** then choose to install Abyss as a Windows Service

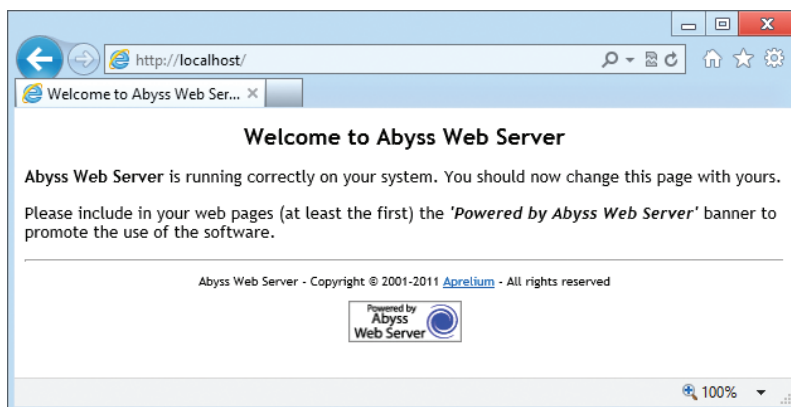


- 4 Next select your preferred language then enter a name and password for future access to the Abyss server console

- 5 Now login using your chosen name and password to see the Abyss console confirm the server Status as Running



- 6 Finally enter **http://localhost** into your browser address field then hit Return to see the default Abyss Welcome page get served up by the Abyss Web Server



Beware



If you choose the Manual Startup option the Abyss logo will not appear in your system tray for easy start/stop control and access to the server console. Instead the console can be found with your browser at **http://localhost:9999**.

Hot tip



In the Abyss console click the Configure button then the General icon to see the default HTTP Port is 80 and the default Documents Path (where your web pages will reside) is **/htdocs**.

