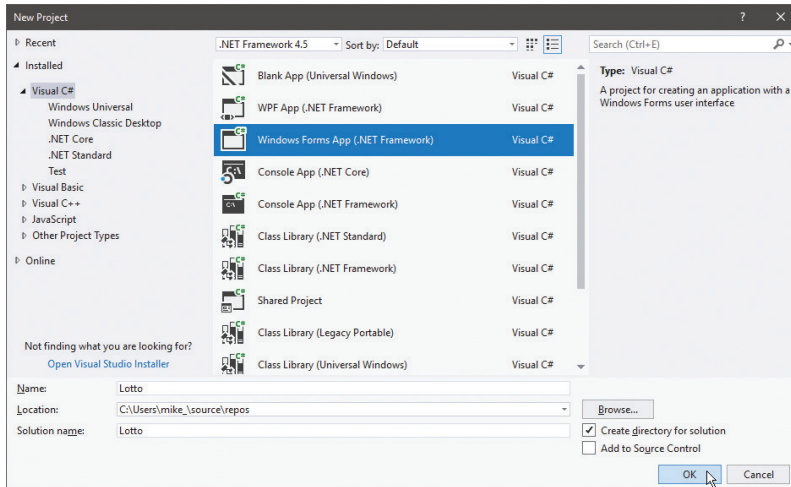


...cont'd

Having established a program plan means you can now create the application basics by adding the components needed to a Form:

- 1 Open the Visual Studio IDE and create a new **Windows Forms Application** project called "Lotto"



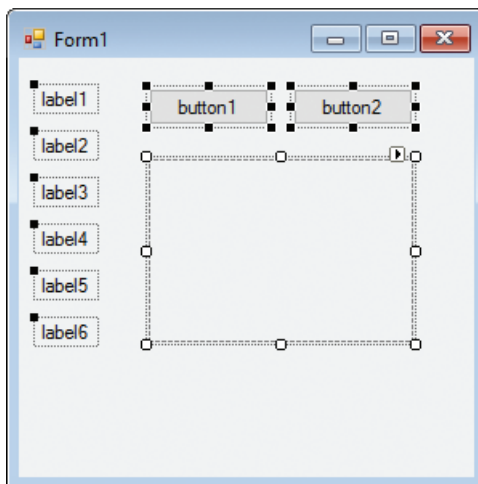
Lotto



Visual Studio 2015 supports classic desktop app development for the Windows Store.

- 2 In the **Form Designer**, add six **Label** controls to the Form from the **Toolbox**

- 3 Now, add two **Button** controls and a **PictureBox** control to the Form



You can drag and drop items from the **Toolbox**, or double-click them to add them to the Form.