

## 1

### Introducing Windows 10

11

Windows releases	12
Windows 10 compatibility	13
New features in Windows 10	14
Editions of Windows 10	16
Microsoft OneDrive	18
Windows 10 connectivity	20
Microsoft Office Online	22
Windows freebies	24

## 2

### Choosing your computer

25

Windows 10 requirements	26
Processors	27
Hardware capabilities	28
Computer types	31
32-bit versus 64-bit	35
Multi-touch	36
Sensors	37
Other hardware features	38

## 3

### Installing Windows 10

39

Upgrade paths	40
Upgrade options	41
Walkthrough clean install	42
Windows Setup	44
Enter product key	45
Type of installation	46
First start	47
Sign in to your PC	49
Finalizing settings	50
Restoring your data	52

## 4

### The Windows 10 interface

53

Start Windows 10	54
Start screen	56
Navigation	58
Action Center	60
Ask Cortana	62
Cortana remote control	64
Cortana reminders	66
Cortana skills	68
Personalization	70

User settings	72
Account picture	74
Picture password	75
PIN code	76
Add a user	77
Close Windows 10	78

## 5

### Windows 10 apps

79

Supplied with Windows 10	80
Start apps	81
App options	84
App switcher & Task list	86
Snap apps	87
Close apps	88
Office app	89
3D apps	90
Windows Ink Workspace	92
OneDrive	94

## 6

### Desktop and Taskbar

95

Switching Desktops	96
Timeline	97
Launching apps	98
Personalize	99
Create a theme	101
Screen resolution	107
Taskbar	108
Power User Menu	110
Multiple displays	111
Application windows	113
Snap and Shake	114
ClearType	115

## 7

### Built-in programs

117

All apps	118
Calculator	120
Notepad	121
WordPad	122
Paint	123
Snipping tool	124
Sticky Notes	125
Insights	126
Fax and scan	128
Command Prompt	129
Windows PowerShell	130
Administrative tools	131
Unknown file types	132
Change default program	133
Search the web for software	134

## 8

## Windows downloads

135

Popular downloads	136
Adobe Reader	137
CCleaner	138
CDBurnerXP	139
IrfanView	140
Notepad++	141
Apache OpenOffice	142
Paint.NET	144
7-Zip	146
µTorrent	148

## 9

## Microsoft Store

149

Accessing the Store	150
Store categories	151
Navigating the Store	152
Exploring categories	153
Search the Store	154
Select an app	156
Download and install	157
Skype app	158
App account	160
Updates	161
Manage apps	162
Desktop apps	164

## 10

## Search techniques

165

Start screen search	166
Search filters	167
File Explorer search	168
Navigation pane	169
Search tools	170
Favorites	171
Folder and search options	172
Indexing options	174
Address bar	176
Save searches	178
Move and copy	179

## 11

## Manage files and folders

181

Files, folders and libraries	182
File Explorer	183
File Explorer layout	185
File Explorer ribbon	186
Folder contents	187
Change view	188

Sort contents	189
Windows 10 libraries	191
Manage library	192
Add a location	193
Arrange library contents	195
Create a library	196
Adjust properties	197
Customize folders	198

## 12

### Email messaging

199

Mail app	200
Reading messages	202
Saving messages	204
Writing messages	206
Adding attachments	208
Syncing options	210
Automating responses	212
Choosing preferences	214
People app	216
Calendar app	218

## 13

### Microsoft Edge

221

Better browsing	222
Interface layout	223
Tabbing pages	224
Search and navigation	226
Opening options	228
Saving favorites	230
Pinning websites	231
Reading articles	232
Reading view	233
Reviewing history	234
Managing downloads	235
Making Web Notes	236
Sharing web pages	238
Printing web pages	239
Customizing Edge	240
Selecting text	242

## 14

### Digital images

243

Digital images	244
Image file formats	245
Photos app	246
Import photos	248
Edit photos	250
Share photos	251
Camera app	252
Movies & TV app	254
Photo apps in the Store	256

## 15

## Windows games

257

Solitaire Collection	258
Candy Crush Soda Saga	260
Xbox Console Companion	261
Streaming Xbox games	262
Games in the Microsoft Store	264
Jigsaw Puzzle	265
Pinball	266
Mahjong	268
Minesweeper	269
Sudoku	270

## 16

## Music and sound

271

Audio connections	272
Groove Music app	273
Streaming music	274
Windows Media Player	276
Play CDs	277
Copy CD tracks	278
Media Player library	279
Local media streaming	280
Streaming Xbox Music	282
Internet radio	284
Text to speech	285
Dictate to your computer	286
Recording	288

## 17

## Devices and printers

289

PC settings – devices	290
Add a device	291
Control Panel devices	292
Update device driver	293
Wireless printer	294
Virtual printers	296
Generic/text only printer	298
Add a scanner	300
Using the scanner	301
Add Bluetooth	303
Add a storage device	304

## 18

## Networking Windows

305

Creating a wired network	306
Connecting a wireless network	307
Enabling network sharing	308
Controlling network settings	309
Viewing network devices	310

Providing network access	311
Sharing files and folders	312
Sharing network printers	314
Sharing to nearby computers	315
Restricting notifications	316
Managing data storage	318
Monitoring network activity	320

## 19

### Protection and Ease of Access

321

Guard your privacy	322
Account management	324
Set up Family Safety	327
Defend the system	328
Ease of Access	330
Start Mobility Center	331
Screen management	332
Battery status	333
Power options	334

## 20

### Troubleshooting

335

Windows error reporting	336
Troubleshooting settings	338
Windows troubleshooters	339
Troubleshooter in action	340
Steps Recorder	341
View the report	343
Get help from a friend	344
Send and respond	346
Use Easy Connect	348
System Restore	349
Start in Safe Mode	351
Program compatibility	352

## 21

### Backup and recovery

353

Sync settings	354
Sync to OneDrive	355
Copy data	356
Copy libraries	358
Reset your system	360
Reinstall your system	363
Enable File History	366
Create a system image	369
System recovery drive	375

## 22

### Security and encryption

377

User account management	378
Set password to expire	380
Hide user list	382
Encrypting files	384
Using EFS	385
Backup encryption key	387
BitLocker To Go	389
Access the encrypted drive	391
Whole system encryption	392

## 23

### Windows PowerShell

393

Opening PowerShell	394
Selecting a folder	396
Running as administrator	397
Creating shortcuts	398
Adjusting appearance	399
Using PowerShell	400
Discovering cmdlets	402
Combining commands	404

## 24

### Update and maintain

405

Windows Update	406
Update settings	408
Update sources	410
Update history	411
Installed updates	413
Upgrading Windows	414
Resetting your PC	415
Disk Cleanup	417
Defragmentation	419

## 25

### Windows performance

421

System Properties	422
Device Manager	424
Improving performance	426
Data Execution Prevention	428
Advanced system settings	429
Task Manager	430
Event Viewer	431
Windows monitors	432
Information on the system	434
Reliability Monitor	436
Boosting performance	437
32-bit versus 64-bit	439

# 26

## Windows Registry

441

The Windows Registry	442
Registry backup	444
Open Registry Editor	445
Example Registry change	446
Finding a key	448
Back up before changes	449
Change a Value entry	450
Using a standard account	451
Scripted updates	453
Applying an update	454
Resize Taskbar thumbnails	455
Remove shortcut suffix	456
Adjust Desktop Peek	458

# 27

## Extending Windows

459

Remote Desktop connection	460
Windows To Go	462
Virtual machine	463
Install guest system	464
Android devices	466
Kindle devices	468
Windows news	470

## Index

471

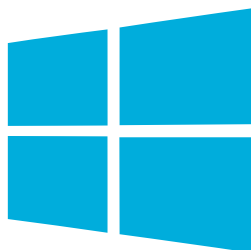


# 1

# Introducing Windows 10

*This chapter introduces Microsoft's latest operating system by describing its new features, explaining what editions are available, and exploring some free Microsoft downloads.*

- 12** Windows releases
- 13** Windows 10 compatibility
- 14** New features in Windows 10
- 16** Editions of Windows 10
- 18** Microsoft OneDrive
- 20** Windows 10 connectivity
- 22** Microsoft Office Online
- 24** Windows freebies



Windows 10 receives regular updates from Microsoft. This book describes a "snapshot" of the operating system at the time of writing. Some features may change as Microsoft continues to develop and improve the operating system.



The original IBM PC was supported by **PC-DOS** and **MS-DOS** operating systems, developed for IBM-compatible PCs.



**Windows 10** for PCs and larger tablets comes in four main editions:

- **Home**
- **Pro**
- **Enterprise**
- **Education**

# Windows releases

There have been many versions of Microsoft Windows. The operating system was initially designed for IBM-compatible PCs, but was later extended to support larger computers such as servers and workstations. A derivative version, Windows CE, was also developed for smaller devices such as PDAs and cell phones.

The main versions of Windows that have been released include:

Date	PC Versions	Server Versions
1985	Windows 1.0	
1987	Windows 2.0	
1990	Windows 3.0	
1993		Windows NT 3.1 Server
1995	Windows 95	
1996		Windows NT 4.0 Server
1998	Windows 98	
2000	Windows ME	Windows 2000 Server
2001	Windows XP	
2003		Windows Server 2003
2006	Windows Vista	Windows Server 2003 R2
2008		Windows Server 2008
2009	Windows 7	Windows Server 2008 R2
2012	Windows 8	Windows Server 2012
2013		Windows Server 2012 R2
2015	Windows 10	
2016		Windows Server 2016

The first three versions of Windows listed above were designed for the 16-bit processor featured in the PCs of the day. Windows 95, 98 and ME added support for 32-bit processors. Windows NT was for 32-bit only, while XP and 2000 added 64-bit support. Windows Vista, Windows 7, Windows 8, Windows 10, and the newer server editions support both 32-bit or 64-bit processors. Each version of Windows builds on the functions and features included in the previous versions, so that the knowledge and experience you have gained will still be valuable, even though the appearance and the specifics of the operations may have changed.

# Windows 10 compatibility

With Windows 10, Microsoft has created an operating system designed to be compatible with a range of different devices. To make this possible, Windows 10 has a new feature called “Continuum” that helps the operating system work better with devices that support both a mouse and keyboard, and touch input – for example: Microsoft’s Surface tablet or Lenovo’s Yoga laptops. Continuum offers two operating modes for each type of device:

## Tablet mode

When a device is in Tablet mode, the layout of the operating system is appropriate for touchscreen input. This means that the Start screen has tiles that you can tap to launch apps, the apps appear full-screen, and you can navigate using touch gestures. When you connect a mouse and keyboard, or flip your laptop around, you are prompted to change into Desktop mode.

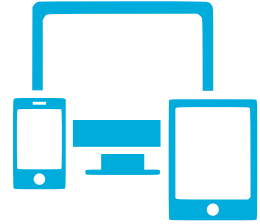
## Desktop mode

When a device is in Desktop mode, the layout of the operating system is appropriate for mouse and keyboard input. This means that the Start menu has an A-Z list that you can click to launch apps, the apps appear in windows, and you can navigate using the mouse buttons or keyboard shortcuts. When you disconnect a mouse and keyboard, or flip your laptop around, you are prompted to change into Tablet mode.

Tablet mode is less demanding of system resources, and its introduction in Windows 10 clearly indicates that Microsoft recognizes the importance of mobile devices for the future.

Windows 10 shares its styling and kernel code with many platforms including desktop PCs, laptops, tablets, and even the Xbox games console. This move towards cross-compatibility is one that is intended to establish Microsoft on multiple devices.

A key element in this is the OneDrive app, which is described in detail later. OneDrive enables users to store all their data and apps online, and synchronize that data across all their devices. As a result, they will be able to log in to OneDrive on any Windows 10 device and immediately access their documents, pictures, media, and preference settings. Whatever or whoever’s device they are using, it will be as though they are using their own.



The New icon pictured above indicates a new or enhanced feature introduced in Windows 10. For example, the **Continuum** feature is new in Windows 10.



**OneDrive** is the original "SkyDrive" facility. It was renamed for copyright reasons. Its features and functions remain unchanged.



Windows 10 provides free semi-annual **feature updates** that download automatically to add new features as they become available.



The customizable **Start menu** is a new and welcome feature in Windows 10.



**Cortana** is a new feature in Windows 10 and requires you to have a Microsoft account. Performance may vary by region and device.

# New features in Windows 10

Each new version of Windows adds new features and facilities. In Windows 10, these include:

## Familiar and improved

- **Customizable Start menu** – a welcome return after the controversial removal of the Start menu in Windows 8.
- **Windows Defender & Windows Firewall** – integral anti-virus defense against malware and spyware.
- **Fast Startup** – rapid system startup and ready to instantly resume from Sleep mode.
- **Task View** – enhanced with Timeline to quickly resume activities you were working on in the past.
- **Battery Saver** – limits background activity to make the most of your battery.
- **Windows Update** – automatically helps keep your device safer and running smoothly.
- **Bluetooth** – automatically detects nearby devices that can be easily paired for file sharing.

## Cortana Personal Digital Assistant

- **Talk or type naturally** – lets you ask for assistance by typing into a text box or by speaking into a microphone.
- **Personal proactive suggestions** – provides intelligent recommendations based upon your personal information.
- **Reminders** – prompts you according to the time of day, your location, or the person you are in contact with.
- **Search the web, your device, and the Cloud** – find help, apps, files, settings, or anything, anywhere.
- **“Hey Cortana” hands-free activation** – passive voice activation recognizes your voice.

...cont'd

## Windows Hello

- **Native fingerprint recognition** – the ability to log in to the operating system using a fingerprint reader.
- **Native facial and iris recognition** – the ability to log in to the operating system using a camera.
- **Enterprise level security** – the ability to log in to the operating system using a 4-digit PIN code or picture.

## Multi-doing

- **Virtual desktops** – multiple desktops to separate related tasks into their own workspaces.
- **Snap Assist** – easily position up to four apps on the screen.
- **Snap Across** – easily position apps across different monitors.

## Continuum

- **Tablet mode** – an interface appropriate for touch input and navigation using gestures.
- **Desktop mode** – an interface appropriate for mouse and keyboard input, and navigation clicks and shortcuts.

## Microsoft Edge

- **Web browser** – streamlined for compliance with the latest HTML5 web standards.
- **Reading view** – instantly remove formatting distractions from web pages to make reading easier.
- **Built-in ink support** – add Web Notes to existing web pages then save or share the edited page.
- **Cortana integration** – search the device, web, and Cloud to quickly find what you need.



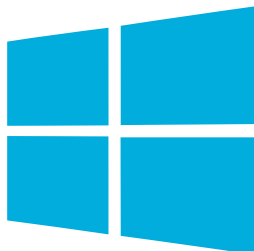
**Windows Hello** is new in Windows 10. Facial recognition requires a camera that has RGB, infrared, and 3D lenses.



**Virtual desktops** and **Continuum** are both new features in Windows 10.



**Microsoft Edge** is new in Windows 10. It lets you write **Web Notes** with a digital pen, with your mouse, or with your finger on touchscreen devices.



# Editions of Windows 10

There are four main editions of Windows 10 for PCs and tablets:

## Windows 10 Home edition

This is the consumer-focused desktop version that includes a broad range of Universal Windows Apps such as Photos, Maps, Mail, Calendar, and Groove Music.

## Windows 10 Pro edition

This is the desktop version for small businesses.

## Windows 10 Enterprise edition

This is the desktop version for large organizations.

## Windows 10 Education edition

This builds on the Enterprise edition to meet the needs of schools.

The following tables list the features in Windows 10 and illustrate that some of the features are specific to certain editions:



There is also a **Windows 10 Pro for Workstations** edition for intensive computing on high-end hardware.

Features	Home	Pro	Enterprise	Education
Customizable Start menu	Y	Y	Y	Y
Defender & Firewall	Y	Y	Y	Y
Fast start & InstantGo	Y	Y	Y	Y
TPM support	Y	Y	Y	Y
Battery Saver	Y	Y	Y	Y
Windows Update	Y	Y	Y	Y
Cortana Digital Assistant	Y	Y	Y	Y
Windows Hello login	Y	Y	Y	Y
Virtual desktops	Y	Y	Y	Y
Snap Assist	Y	Y	Y	Y
Tablet & Desktop modes	Y	Y	Y	Y
Microsoft Edge	Y	Y	Y	Y
Device Encryption	Y	Y	Y	Y
Domain Join	-	Y	Y	Y
Group Policy Manager	-	Y	Y	Y
BitLocker	-	Y	Y	Y
Enterprise Mode IE	-	Y	Y	Y
Assigned Access 8.1	-	Y	Y	Y
Remote Desktop	-	Y	Y	Y

cont'd

Features	Home	Pro	Enterprise	Education
Client Hyper-V	-	Y	Y	Y
Direct Access	-	Y	Y	Y
Windows To Go Creator	-	-	Y	Y
AppLocker	-	-	Y	Y
Branch Cache	-	-	Y	Y
Start Screen Group Policy	-	-	Y	Y
Side-load Business Apps	Y	Y	Y	Y
Mobile Device Manager	Y	Y	Y	Y
Azure Active Directory	-	Y	Y	Y
Business Store	-	Y	Y	Y
Granular UX Control	-	-	Y	Y
Easy Upgrade (Pro to Enterprise)	-	Y	Y	-
Easy Upgrade (Home to Education)	Y	-	-	Y
Microsoft Passport	Y	Y	Y	Y
Enterprise Data Protection	-	Y	Y	Y
Credential Guard	-	-	Y	Y
Device Guard	-	-	Y	Y
Update for Business	-	Y	Y	Y
Current Branch - Business	-	Y	Y	Y
Long Term Service Branch	-	-	Y	-

There are also three special editions of Windows 10:

### Windows 10 S edition

This is a feature-limited version designed primarily for low-end devices in education.

### Windows 10 IoT edition

This is an embedded version for use in small low-cost devices intended for data management.

### Windows 10 Team

This is a version for the Surface Hub interactive whiteboard.



Windows 10 brings **Xbox gaming** to the PC and is available in 111 languages!



# Microsoft OneDrive

A very important function built in to Windows 10 is its ability to utilize what is commonly known as “The Cloud”. Essentially, cloud computing is a technology that uses the internet and centralized remote servers to maintain data and applications. It allows consumers and businesses to use applications they don’t own, and to access their personal files on any computer that has internet access. The technology enables much more efficient computing by centralizing data storage, processing and bandwidth.

So how do you get into the Cloud? There are actually several ways: One is to open an account with a dedicated service such as Dropbox. You will be given a free amount of storage space; 2GB initially (which can be increased by referring friends), in which you can store virtually anything you choose to. If you need more, you will be charged a fee depending on the amount required.

A second way is to buy a product from a major software manufacturer. A typical example is Acronis True Image – a data backup program that provides huge online storage, which enables you to create Cloud-based backups.

A third way is courtesy of Microsoft OneDrive, which can be accessed online. OneDrive is basically a portal that allows you to access 5GB of free online storage.



Discover more on **Dropbox** Cloud storage at [dropbox.com](https://dropbox.com)

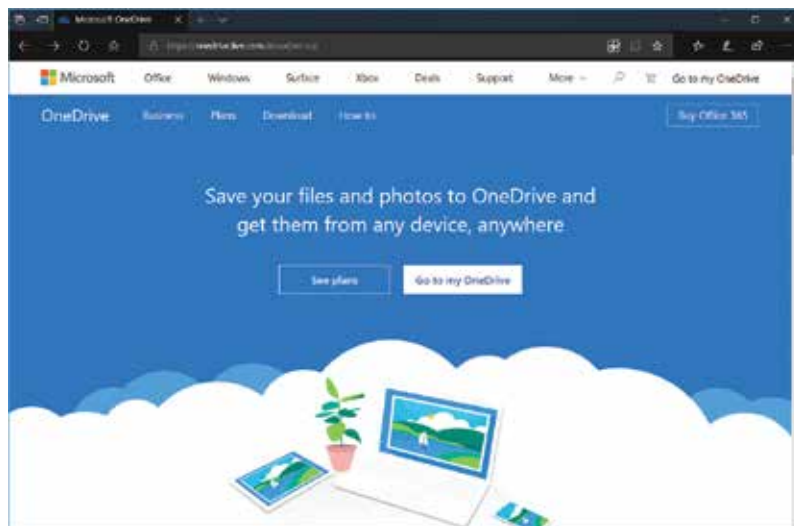


Discover more on **True Image** at [acronis.com](https://acronis.com)



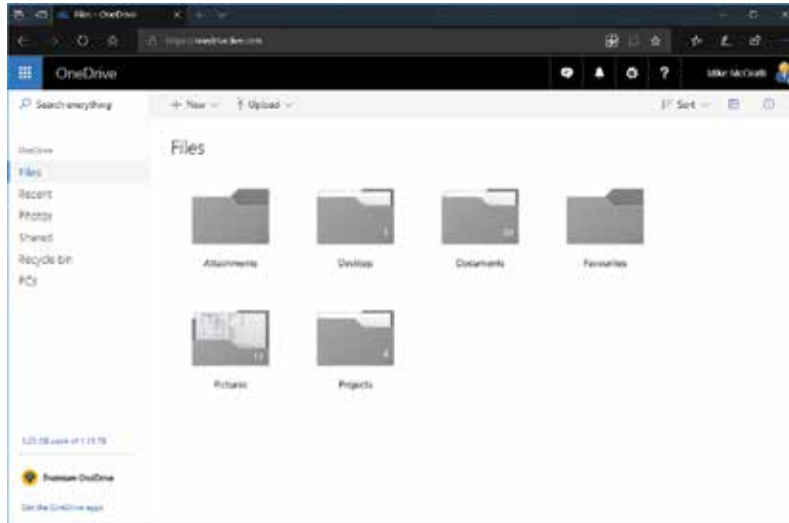
## OneDrive

You need a Microsoft account to sign in to **OneDrive**. By default, you get 5GB of free OneDrive storage space with Windows10. Find up-to-date information on plan allowances and pricing at <https://onedrive.live.com/about/en-us/plans>





...cont'd



You can log in to access OneDrive with any web browser. Simply visit [onedrive.live.com](https://onedrive.live.com)

Once logged in, you will see that OneDrive has started you off with a number of pre-configured folders. Windows 10 is supplied configured to automatically synchronize these folders on OneDrive. You can delete these folders, rename them, create more folders, nest folders within folders, and upload/download files.

Once uploaded, your data can be accessed from any smartphone, tablet or PC, from anywhere in the world and at any time. You can also access and upload data from within programs in the Microsoft Office suite of applications.

One of the coolest features of OneDrive is that it enables online sharing and collaboration. For example, you can share your holiday snaps with friends and family regardless of where they are, while business applications provide access to documents while on the move or sharing documents between offices.

A key aspect of OneDrive is that it enables data to be synchronized across a range of devices. For example, emails on your PC can be automatically loaded onto your smartphone or tablet, and vice versa. You can also synchronize various settings such as personalization of desktop background, theme, colors, passwords, app settings, and many more. This enables users to maintain the computing environment they are comfortable with across all their computing devices.



If you access OneDrive directly from a browser, you will have a "lite" version of **Microsoft Office** with which to create documents while online.



**Miracast** is a Wireless Display (WiDi) technology your PC can use to project its screen onto any TV that supports Miracast.



**Cortana** and **Groove Music** are new features in Windows 10.



You must use the same **Microsoft account** on your PC, phone, and tablet to automatically synchronize your content across these devices.

# Windows 10 connectivity

Windows 10 is terrific at connecting all your devices – whether it's a 3-year-old printer or projecting to your brand new TV with Miracast. Windows 10 is built on a common core and includes Universal Windows Apps, so people using Windows 10 for both their PC and portable devices will get an optimal, seamless experience as they transition between devices throughout the day.

Microsoft recognizes that many people also use iPhone or Android devices but want to ensure their Windows 10 content remains available to them across all the devices they own, regardless of the operating system. So Microsoft has produced a number of apps for Android, iPhone and iPad devices to make them work well with a Windows 10 PC.

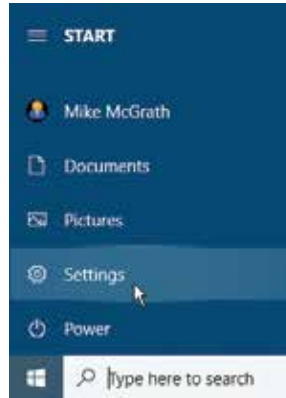
So, whatever the operating system, this means that all your files and content can be magically available on your PC and phone:

- With the Cortana app on your phone you can have your Personal Digital Assistant always available.
- With the OneDrive app on your phone, every photo you take can automatically appear on your phone and Windows 10 PC.
- With the Groove Music app you can access and play your music from OneDrive on your phone or Windows 10 PC.
- With the OneNote app on your phone, any note you write on your Windows 10 PC can show up on your phone – and any note you write on your phone can show up on your PC.
- With the Skype app on your phone you can make video calls and messages – free over Wi-Fi.
- With Word, Excel, and PowerPoint apps on your phone you can work on Office documents without moving files around.
- With the Outlook app on your phone you can get your email messages and calendar reminders everywhere.

To help people make everything work together, the Windows 10 Settings screen provides a feature that will help you link your Windows 10 PC to your Android, iPhone or iPad device.

...cont'd

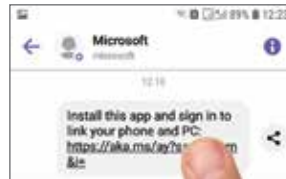
1 Click the **Start** button, then choose the **Settings** item



2 Next, click **Phone, Add a phone, Link phone** to open the "Microsoft account" dialog

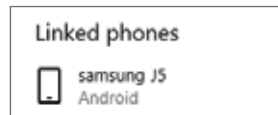
3 Enter your phone number in the dialog, then click the button to **Send** button a message to your phone

4 The received message contains a link to install the **Your Phone Companion** app – tap the link and install the app

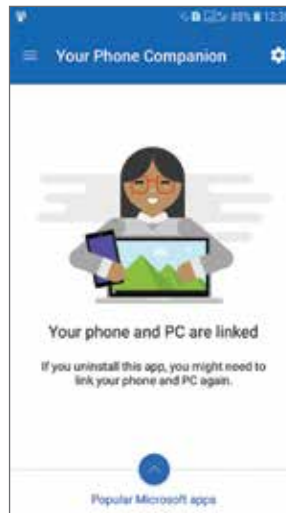


5 Grant permissions to allow the **Your Phone Companion** app access to your phone's file system

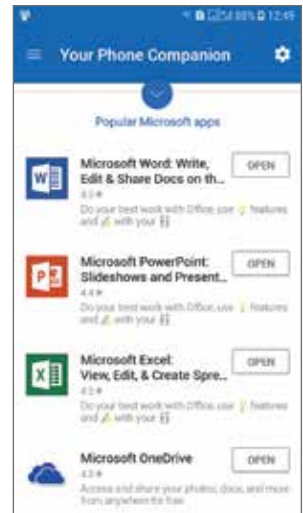
6 Your PC now recognizes your phone as a linked device on the **Settings, Phone** screen



7 Your phone is now linked to your PC and provides an option to install popular Microsoft apps onto your phone. A **Your Phone** item is added to the Start menu so you can access text messages and photos on your phone from your PC



You can find the Your Phone Companion app on **Google Play** store.





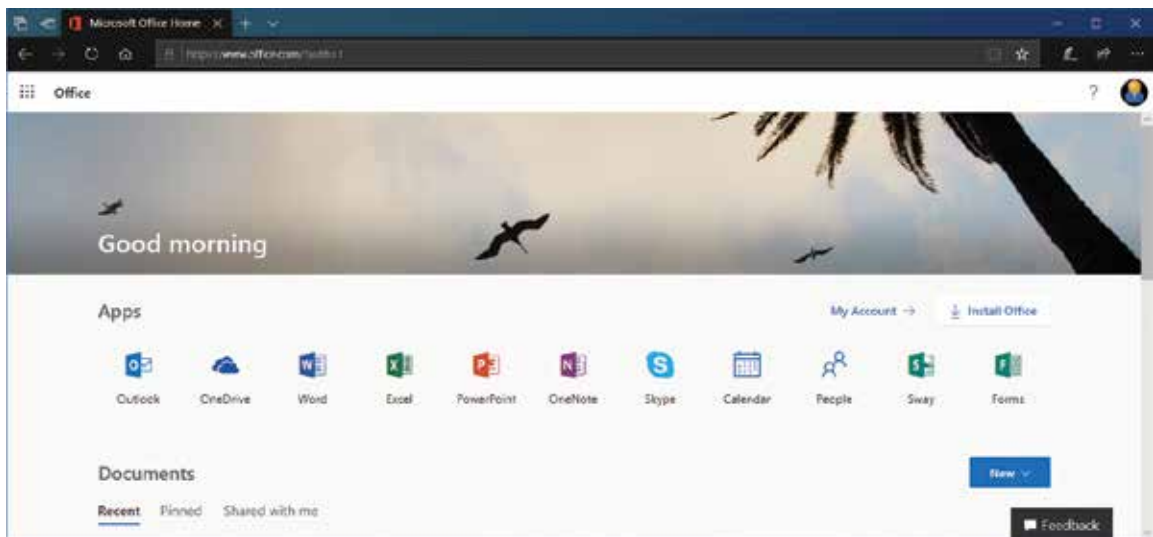
You can compare versions of **Microsoft Office** online at [products.office.com/en-us/compare-all-microsoft-office-products](http://products.office.com/en-us/compare-all-microsoft-office-products)

# Microsoft Office Online

Microsoft Office is a very important application for many people, so here we will take a brief look at Microsoft Office Online and see how it fits in with Windows 10.

Office Online includes the core apps: Word, Excel, PowerPoint, Outlook, and OneNote for both PC and touchscreen. Your completed documents, spreadsheets, and presentations can be saved online in your OneDrive for easy access or sharing. Alternatively, they can be downloaded to your computer and saved as a local file – just as you would with an installed app.

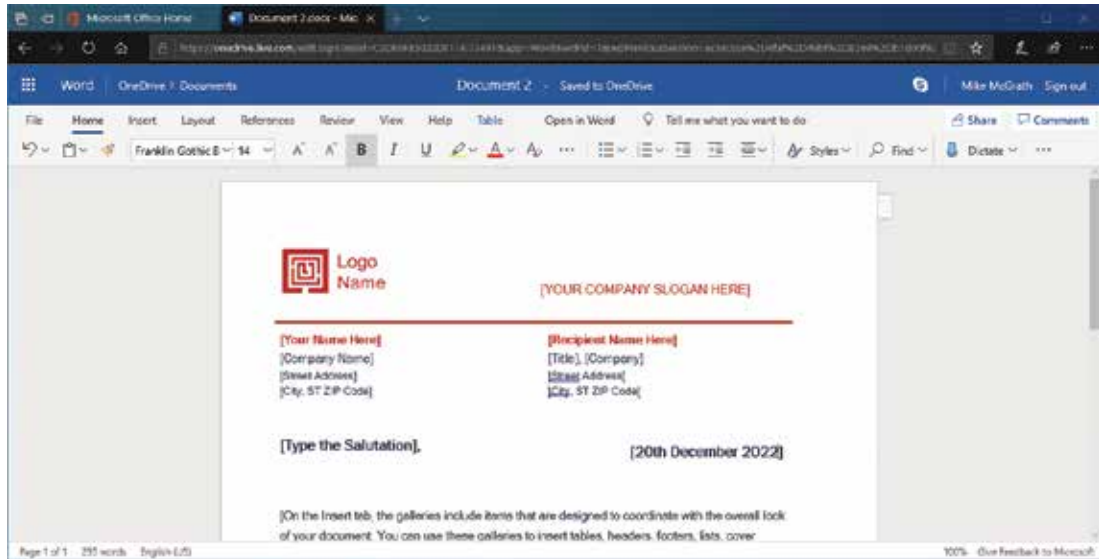
- 1 Open the Microsoft Edge web browser, then navigate to the **office.com** website
- 2 Click the **Sign in** button then type the email address and credentials for your Microsoft account



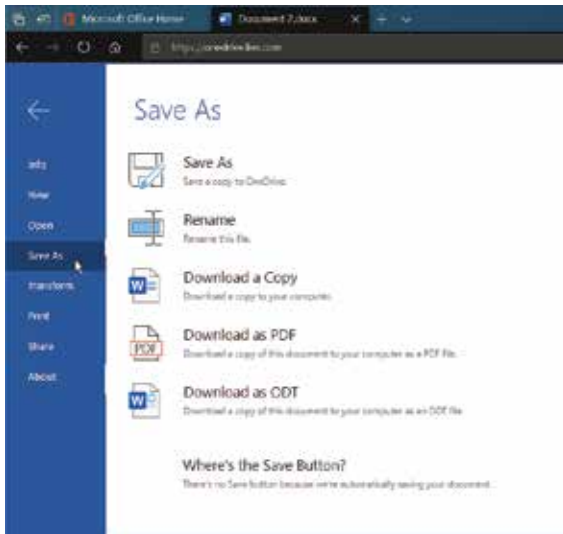
You will need a Microsoft account to sign in to **Office Online** apps.

- 3 Choose the online app you wish to use. For example, choose the **Word** app to create a cover letter
- 4 When the Word app opens on a new tab in the browser you are presented with a selection of ready-made templates that you can select. For example, choose the **Business letter** template

...cont'd



- 5 Edit the template to suit your requirements by inserting your name and address details, etc.
- 6 When you are happy with the letter, click the **File** menu item at the top-left of the window
- 7 Now, choose a save location and document format



Use the **Rename** option before saving unless you are happy to use the automatically assigned default name.

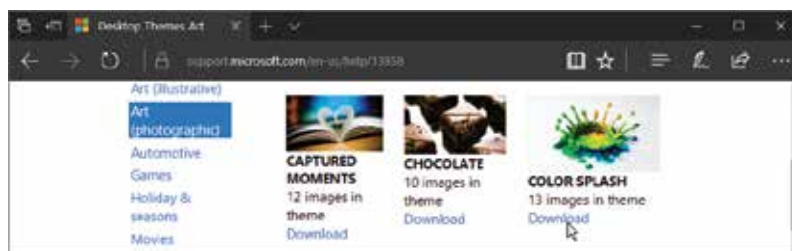


Other free Microsoft downloads are available at this website, such as **Desktop Backgrounds** and **Language Packs**.

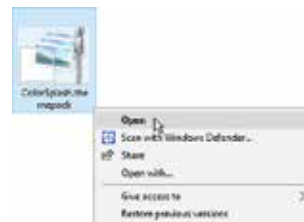
# Windows freebies

Microsoft knows we all like to get something for nothing so they offer free theme downloads with which to personalize your PC at [support.microsoft.com/en-us/help/14165](http://support.microsoft.com/en-us/help/14165). The themes are divided into categories of interest, such as “Art (photographic)”. To grab a free theme:

- 1 Click the **See all themes** link then choose a category from the list on the left of the themes page
- 2 Scroll through the list to choose a theme, then click its **Download** link to get the “themepack” file



- 3 When the download completes you will find the themepack file in your **Downloads** folder



- 4 Right-click on the file icon and choose **Open** to install that theme on your PC



You can also download free **Themes** from the Microsoft Store.



You can change or uninstall themes at any time from **Settings**, **Personalization**, **Themes**. See page 99-106 for more information on themes.

