

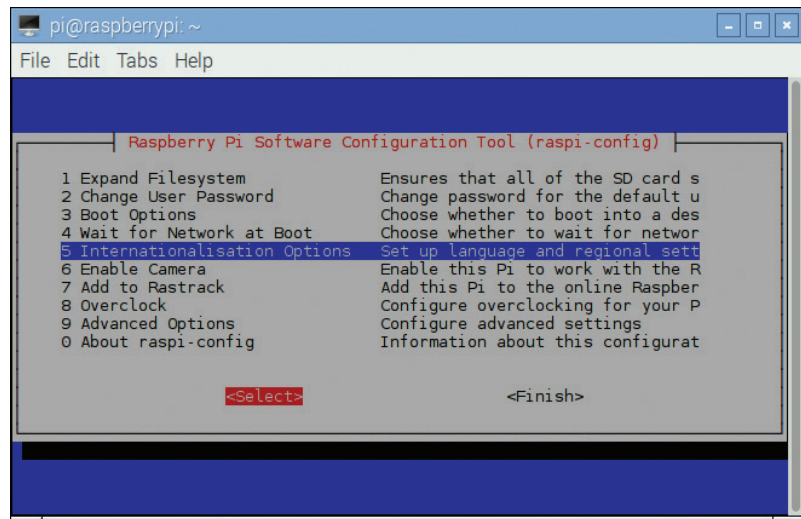
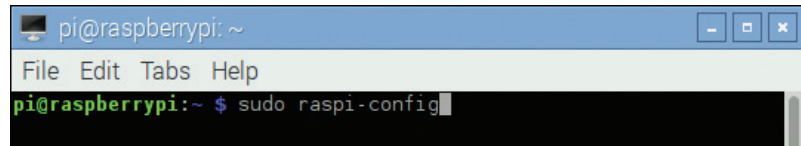
Configuring the system

After you start up your Raspberry Pi you can set up various system options using the configuration tool:

- 1 Click the “Terminal” launcher button to open a Terminal window that provides a command line prompt



- 2 Precisely type the command **sudo raspi-config** at the prompt, then hit Return to open the configuration tool



- 3 Use the keyboard up/down arrow keys to highlight an item you wish to configure
- 4 Hit the Return key to select a highlighted item and reveal its options, e.g. choose “Internationalisation Options”



The **sudo** command provides administration privileges that allow system configuration changes.



If the Raspberry Pi screen does not fill your monitor, choose the Advanced Options’ “Overscan” configuration menu item then select the “Disable” option.

...cont'd

- 5 Use the arrow keys to now choose “Change Locale” and deselect the current character set from the list then select a character set for your locale – such as “en_US.UTF-8”

```
Raspberry Pi Software Configuration Tool (raspi-config)
I1 Change Locale          Set up language and regional sett
I2 Change Timezone       Set up timezone to match your loc
I3 Change Keyboard Layout Set the keyboard layout to match
I4 Change Wi-fi Country  Set the legal channels used in yo

<Select>                <Back>
```

- 6 Choose “Change Timezone” and select your region and timezone – such as “America” then “Eastern”

```
Configuring tzdata
Please select the city or region corresponding to your time zone.

Time zone:

Alaska
Aleutian
Arizona
Central
Eastern
Hawaii
Starke County (Indiana)
Michigan
Mountain
Pacific Ocean
Pacific-New
Samoa

<Ok>                <Cancel>
```



You can re-visit the configuration menu at any time from a command prompt by issuing the command **sudo raspi-config**.

- 7 Press the right arrow key to select “OK”, then hit Return to apply the configuration change

```
pi@raspberrypi:~
File Edit Tabs Help
pi@raspberrypi:~ $ sudo raspi-config

Current default time zone: 'US/Eastern'
Local time is now:      Thu Feb 25 22:01:15 EST 2016.
Universal Time is now:  Fri Feb 26 03:01:15 UTC 2016.

pi@raspberrypi:~ $
```