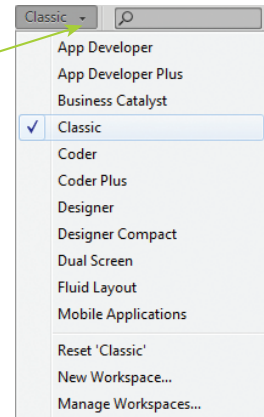


Workspaces

Within Dreamweaver CS6, there are a number of options for how you want to set up your work area, known as workspaces. These contain all of the main elements, but are arranged to suit how you want to work, mainly as a designer or a writer of code. To access and select different workspaces:

1

Click here at the right-hand side of the main menu bar. Select the relevant workspace



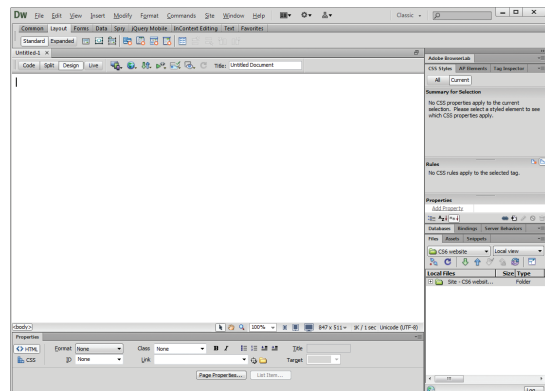
Don't forget



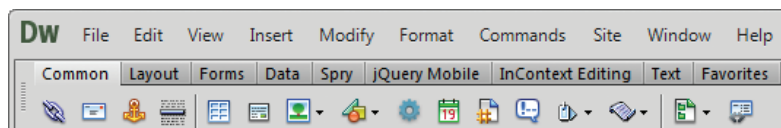
Two of the other workspaces, named App Developer and App Developer Plus, can be used by web developers using database technology and programming code.

Classic

This is the workspace that was available with some earlier versions of Dreamweaver. By default, this displays toolbars, the main work area, and panels.



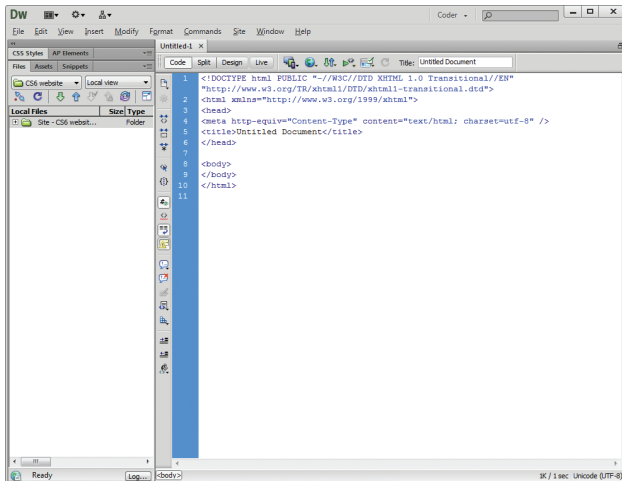
One feature of the Classic workspace, is the location of the Insert panel, at the top of the main window, just below the menu bar.



...cont'd

Coder

This can be used if you mainly create web pages in code. The panels are arranged on the left-hand side and, by default, display those features most frequently used when working in code.



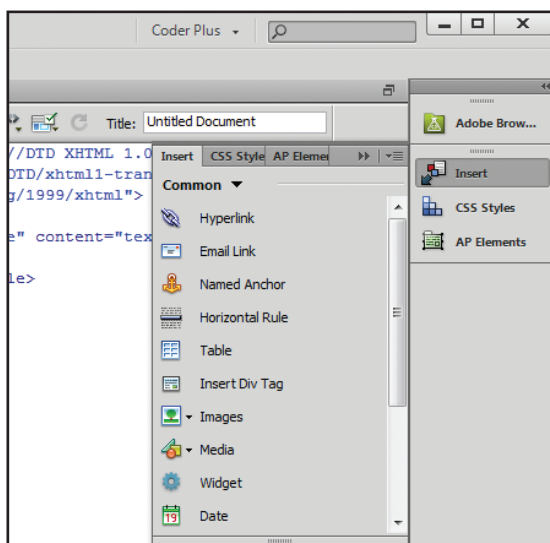
Don't forget



In the Coder workspace, it is still possible to access Design View to see how your page will look in a visual environment. For more information about the different views, see Chapter Two.

Coder Plus

This is an enhanced version of the Coder workspace, with additional panels situated on the right-hand side, including the Insert panel and the CSS Styles panel.



...cont'd

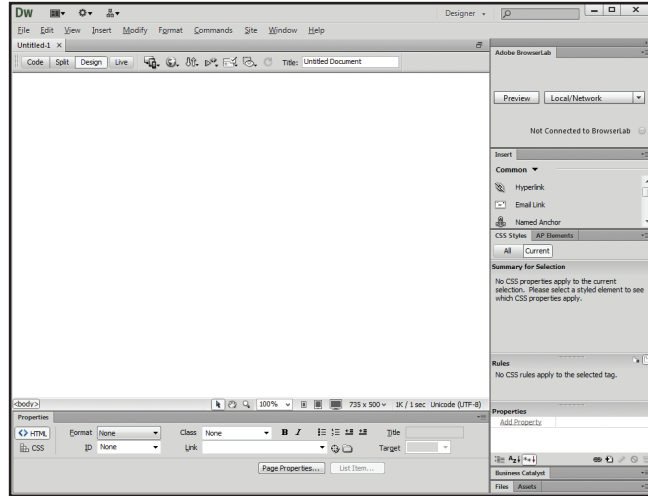
Designer

This is the default workspace, and is similar to the Classic workspace, except that the Insert panel is grouped with the rest of the other panels, at the right-hand side of the main window.

Don't forget

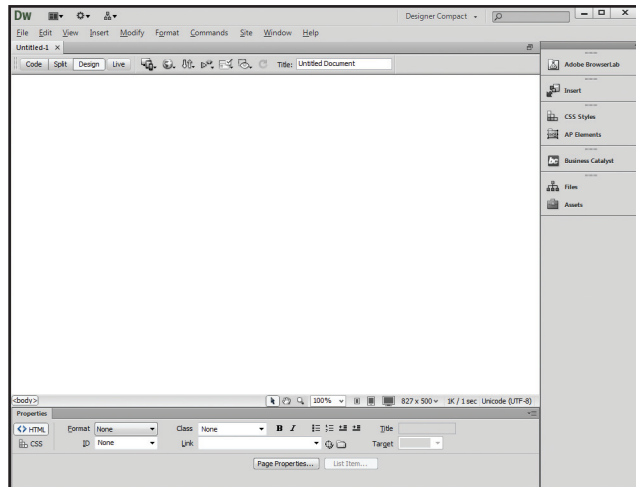


The styles and functionality of panels in Dreamweaver CS6 are now standardized with the panels in the other products in the CS6 suite of programs.



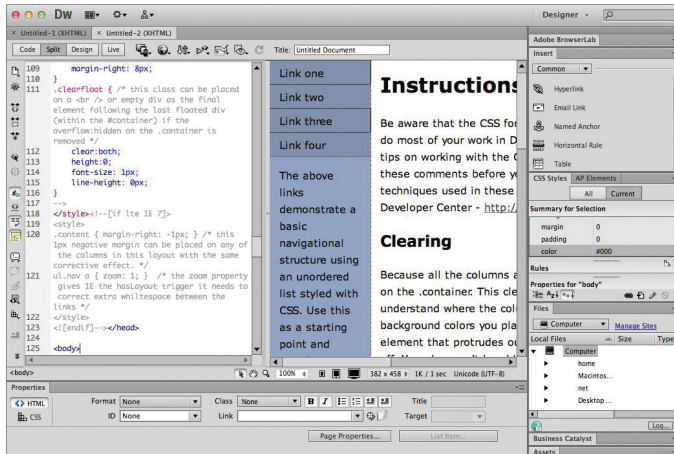
Designer Compact

This is similar to the standard Designer workspace, except that the panels are minimized, and group at the right-hand side. Each panel is activated by clicking on it, and it is then visible for one action. To keep a panel visible, drag it away from the group.

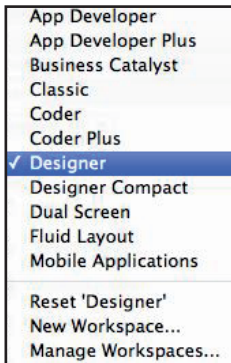


Workspaces (Mac)

With some previous version of Dreamweaver, the Mac version did not have the same versatility, in terms of workspaces. However, in CS6, this has been addressed, and the Mac version now has the same options as the Windows one. The only difference is the standard Mac interface.



The same workspace options are available.



The same view options are also available (see Chapter Two).

