

1

Introducing Windows 10

11

Windows releases	12
Windows 10 compatibility	13
New features in Windows 10	14
Editions of Windows 10	16
Microsoft OneDrive	18
Windows 10 connectivity	20
Microsoft Office Online	22
Windows freebies	24

2

Choosing your computer

25

Windows 10 requirements	26
Processors	27
Hardware capabilities	28
Computer types	31
32-bit versus 64-bit	35
Multi-touch	36
Sensors	37
Other hardware features	38

3

Installing Windows 10

39

Upgrade paths	40
Upgrade options	41
Walkthrough clean install	42
Windows setup	44
Enter product key	45
Type of installation	46
First start	48
Sign in to your PC	49
Finalizing settings	51
Restoring your data	52

4

The Windows 10 interface

53

Start Windows 10	54
Start screen	56
Navigation	58
Action Center	60
Ask Cortana	62
Cortana remote control	64
Cortana reminders	66
Notification sync	68
Personalization	70

User settings	72
Account picture	74
Picture password	75
PIN code	76
Add a user	77
Close Windows 10	78

5

Windows 10 apps

79

Supplied with Windows 10	80
Start apps	81
App options	84
App switcher & Task list	86
Snap apps	87
Close apps	88
Get Office	89
Paint 3D	90
Windows Ink Workspace	92
OneDrive	94

6

Desktop and Taskbar

95

Switching Desktops	96
Launching apps	98
Personalize	99
Create a theme	101
Screen resolution	107
Taskbar	108
Power User Menu	110
Multiple displays	111
Application windows	113
Snap and Shake	114
ClearType	115

7

Built-in programs

117

All apps	118
Calculator	120
Notepad	121
WordPad	122
Paint	123
Snipping tool	124
Sticky Notes	125
Insights	126
Fax and scan	128
Command Prompt	129
Windows PowerShell	130
Administrative tools	131
Unknown file types	132
Change default program	133
Search the web for software	134

8

Windows downloads

135

Popular downloads	136
Adobe Reader	137
CCleaner	138
CDBurnerXP	139
IrfanView	140
Notepad++	141
Apache OpenOffice	142
Paint.NET	144
7-Zip	146
µTorrent	148

9

Windows Store

149

Accessing the Store	150
Store categories	151
Navigating the Store	152
Exploring categories	153
Search the Store	154
Select an app	156
Download and install	157
Skype app	158
App account	160
Updates	161
Manage apps	162
Desktop apps	164

10

Search techniques

165

Start screen search	166
Search filters	167
File Explorer search	168
Navigation pane	169
Search tools	170
Favorites	171
Folder and search options	172
Indexing options	174
Address bar	176
Save searches	178
Move and copy	179

11

Manage files and folders

181

Files, folders and libraries	182
File Explorer	183
File Explorer layout	185
File Explorer ribbon	186
Folder contents	187
Change view	188

Sort contents	189
Windows 10 libraries	191
Manage library	192
Add a location	193
Arrange library contents	195
Create a library	196
Adjust properties	197
Customize folders	198

12

Email messaging

199

Mail app	200
Reading messages	202
Saving messages	204
Writing messages	206
Adding attachments	208
Syncing options	210
Automating responses	212
Choosing preferences	214
People app	216
Calendar app	218

13

Microsoft Edge

221

Better browsing	222
Interface layout	223
Tabbing pages	224
Search and navigation	226
Opening options	228
Saving favorites	230
Pinning websites	231
Reading articles	232
Reading view	233
Reviewing history	234
Managing downloads	235
Making Web Notes	236
Sharing pages	238
Customizing Edge	240
Selecting text	242

14

Digital images

243

Digital images	244
Image file formats	245
Photos app	246
Import photos	248
Edit photos	250
Share photos	251
Camera app	252
Movies & TV app	254
Photo apps in the Store	256

15

Windows games

257

Games support	258
Candy Crush Soda Saga	260
Xbox app	261
Streaming Xbox games	262
Games in the Windows Store	264
Explore Pinball FX2	265
PuzzleTouch	267
Microsoft Mahjong	268
Minesweeper	269
Sudoku	270

16

Music and sound

271

Audio connections	272
Groove Music app	273
Download media files	274
Windows Media Player	276
Play CDs	277
Copy CD tracks	278
Media Player library	279
Internet radio	280
Home media streaming	281
Play to device or computer	282
Dictate to your computer	283
Text to speech	285
Streaming Xbox Music	286
Recording	288

17

Devices and printers

289

PC settings – devices	290
Add a device	291
Control Panel devices	292
Update device driver	293
Wireless printer	294
Virtual printers	296
Generic/text only printer	298
Add a scanner	300
Using the scanner	301
Add Bluetooth	303
Add a storage device	304

18

Networking Windows

305

Create a network	306
Network classification	308
Create a HomeGroup	309
Join the HomeGroup	310

Network settings	311
Connect to a wireless network	312
View network devices	314
View the HomeGroup	315
Network and Sharing Center	316
PC settings	318
Monitor network	319
Sharing folders	320

19

Protection and Ease of Access

321

Guard your privacy	322
Account management	324
Set up Family Safety	327
Defend the system	328
Ease of Access	330
Start Mobility Center	331
Screen management	332
Battery status	333
Power options	334

20

Troubleshooting

335

Windows error reporting	336
Troubleshooting settings	338
Windows troubleshooters	339
Troubleshooter in action	340
Problem Steps Recorder	341
View the report	343
Get help from a friend	344
Send and respond	346
Use Easy Connect	348
System Restore	349
Start in Safe Mode	351
Program compatibility	352

21

Backup and recovery

353

Sync settings	354
Sync to OneDrive	355
Copy data	356
Copy libraries	358
Reset your system	360
Reinstall your system	363
Enable File History	366
Create a system image	369
System recovery drive	375

22

Security and encryption

377

User account management	378
Set password to expire	380
Hide user list	382
Encrypting files	384
Using EFS	385
Backup encryption key	387
BitLocker To Go	389
Access the encrypted drive	391
Whole system encryption	392

23

Windows PowerShell

393

Opening PowerShell	394
Selecting a folder	396
Running as administrator	397
Creating shortcuts	398
Adjusting appearance	399
Using PowerShell	400
Discovering cmdlets	402
Combining commands	404

24

Update and maintain

405

Windows Update	406
Update settings	408
Update sources	410
Update history	411
Installed updates	413
Upgrading Windows	414
Resetting your PC	415
Disk Cleanup	417
Defragmentation	419

25

Windows performance

421

System Properties	422
Device Manager	424
Improving performance	426
Data Execution Prevention	428
Advanced system settings	429
Task Manager	430
Event Viewer	431
Windows monitors	432
Information on the system	434
Reliability Monitor	436
Boosting performance	437
32-bit versus 64-bit	439

26

Windows Registry

441

The Windows Registry	442
Registry backup	444
Open Registry Editor	445
Example Registry change	446
Finding a key	448
Back up before changes	449
Change a Value entry	450
Using a standard account	451
Scripted updates	453
Applying an update	454
Resize Taskbar thumbnails	455
Remove shortcut suffix	456
Adjust Desktop Peek	458

27

Extending Windows

459

Remote Desktop connection	460
Windows To Go	462
Virtual machine	463
Install guest system	464
Windows devices	466
Phone Companion app	468
Windows news	470

Index

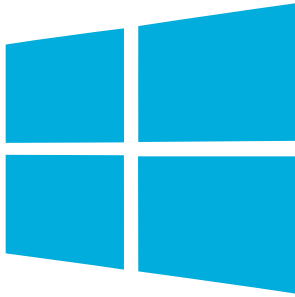
471

1

Introducing Windows 10

*This chapter introduces
Microsoft's latest operating
system, Windows 10.
We see the new features,
what editions are available,
and take a look at some free
Microsoft downloads.*

- 12** Windows releases
- 13** Windows 10 compatibility
- 14** New features in Windows 10
- 16** Editions of Windows 10
- 18** Microsoft OneDrive
- 20** Windows 10 connectivity
- 22** Microsoft Office Online
- 24** Windows freebies



Windows releases

There have been many versions of Microsoft Windows. The operating system was initially designed for IBM-compatible PCs, but was later extended to support larger computers such as servers and workstations. A derivative version, Windows CE, was also developed for smaller devices such as PDAs and cell phones.

The main versions of Windows that have been released include:

Date	Client PC	Server	Mobile
1985	Win 1.0		
1987	Win 2.0		
1990	Win 3.0		
1993		Win NT 3.1	
1995	Win 95		
1996		Win NT 4.0	Win CE 1.0
1998	Win 98		
2000	Win ME	Win 2000	Win CE 3.0, Pocket PC 2000
2001	Win XP		Pocket PC 2002
2003		Win Server 2003	Win Mobile 2003
2006	Win Vista		
2007		Win Home Server	Win Mobile 6
2009	Win 7	Win Server 2008	
2010			Win Phone 7
2012	Win 8	Win Server 2012	Win Phone 8
2015	Win 10		Win 10 Mobile



The original IBM PC was supported by PC-DOS and MS-DOS operating systems, developed for IBM-compatible PCs.



Windows 10 for PCs and larger tablets comes in four editions:

- Windows 10 Home
- Windows 10 Pro
- Windows 10 Enterprise
- Windows 10 Education

The first three versions of Windows listed above were designed for the 16-bit processor featured in the PCs of the day. Windows 95, 98 and ME added support for 32-bit processors. Windows NT was for 32-bit only, while XP and 2000 added 64-bit support. Windows Vista, Windows 7, Windows 8, Windows 10, and the newer server editions, support both 32-bit or 64-bit processors. Each version of Windows builds on the functions and features included in the previous versions, so that the knowledge and experience you have gained will still be valuable, even though the appearance and the specifics of the operations may have changed.

Windows 10 compatibility

With Windows 10, Microsoft has created an operating system designed to be compatible with a range of different devices. To make this possible, Windows 10 has a new feature called “Continuum” that helps the operating system work better with devices that support both a mouse and keyboard, and touch input. For example: Microsoft’s Surface tablet or Lenovo’s Yoga laptops. Continuum offers two operating modes for each type of device:

Tablet Mode

When a device is in Tablet Mode, the layout of the operating system is appropriate for touchscreen input. This means that the Start screen has tiles that you can tap to launch apps, the apps appear full-screen, and you can navigate using touch gestures. When you connect a mouse and keyboard, or flip your laptop around, you are prompted to change into Desktop Mode.

Desktop Mode

When a device is in Desktop Mode, the layout of the operating system is appropriate for mouse and keyboard input. This means that the Start menu has an A-Z list that you can click to launch apps, the apps appear in windows, and you can navigate using the mouse buttons or keyboard shortcuts. When you disconnect a mouse and keyboard, or flip your laptop around, you are prompted to change into Tablet Mode.

Tablet mode is less demanding of system resources, and its introduction in Windows 10 clearly indicates that Microsoft considers mobile devices to be where the future lies.

Windows 10 shares its styling and kernel code with multiple platforms including smartphones, tablets, PCs and even the Xbox games console. This move towards cross-compatibility is one which is intended to establish Microsoft in the mobile market.

A key element in this is the OneDrive app, which we’ll look at later. OneDrive enables users to store all their data and apps online, and synchronize that data across all their devices. As a result, they will be able to log in to OneDrive on any Windows 10 device and immediately access their data, preference settings, etc. Whatever or whoever’s device they are using, it will be as though they are using their own.



The New icon pictured above indicates a new or enhanced feature introduced with the latest version of Windows. The Continuum feature is new in Windows 10.



OneDrive is the original SkyDrive facility. It was renamed for copyright reasons. Its features and functions remain unchanged.



Windows 10 provides free semi-annual "feature updates" that download automatically to add new features to the operating system when they become available. This book describes the Creators update of 2017.



The customizable Start menu is a new and welcome feature in Windows 10.



InstantGo is a hardware-dependent feature and Trusted Platform Module support requires TPM1.2.



Cortana is a new feature in Windows 10 and requires you to have a Microsoft account. Performance may vary by region and device.

New features in Windows 10

Each new version of Windows adds new features and facilities. In Windows 10, these include:

Familiar and improved

- **Customizable Start menu** – a welcome return after the controversial removal of the Start menu in Windows 8.
- **Windows Defender & Windows Firewall** – integral anti-virus defense against malware and spyware.
- **Hiberboot and InstantGo** – fast startup and ready to instantly resume from Sleep mode.
- **Trusted Platform Module (TPM)** – secure device identification, authentication, and encryption.
- **Battery Saver** – limits background activity to make the most of your battery.
- **Windows Update** – automatically helps keep your device safer and running smoothly.

Cortana Personal Digital Assistant

- **Talk or type naturally** – lets you ask for assistance by typing into a text box or by speaking into a microphone.
- **Personal proactive suggestions** – provides intelligent recommendations based upon your personal information.
- **Reminders** – prompts you according to the time of day, your location, or the person you are in contact with.
- **Search the web, your device, and the Cloud** – find help, apps, files, settings, or anything, anywhere.
- **“Hey Cortana” hands-free activation** – passive voice activation recognizes your voice.

...cont'd

Windows Hello

- **Native fingerprint recognition** – the ability to log in to the operating system using a fingerprint reader.
- **Native facial and iris recognition** – the ability to log in to the operating system using a camera.
- **Enterprise level security** – the ability to log in to the operating system using a 4-digit PIN code or picture.

Multi-doing

- **Virtual desktops** – multiple desktops to separate related tasks into their own workspaces.
- **Snap Assist** – easily position up to four apps on the screen.
- **Snap Across** – easily position apps across different monitors.

Continuum

- **Tablet Mode** – an interface appropriate for touch input and navigation using gestures.
- **Desktop Mode** – an interface appropriate for mouse and keyboard input, and navigation clicks and shortcuts.

Microsoft Edge

- **Web browser** – streamlined for compliance with the latest HTML5 web standards.
- **Reading view** – instantly remove formatting distractions from web pages to make reading easier.
- **Built-in ink support** – add Web Notes to existing web pages then save or share the edited page.
- **Cortana integration** – search the device, web, and Cloud to quickly find what you need.



Windows Hello is new in Windows 10. Facial recognition requires a camera that has RGB, infrared, and 3D lenses.



Virtual desktops and Continuum are both new features in Windows 10.



Microsoft Edge is new in Windows 10. It lets you write Web Notes with your finger on touchscreen devices.

Editions of Windows 10

There are four editions of Windows 10 for PCs and tablets with a screen size of over 8 inches – Home, Pro, Enterprise, and Education.



Windows 10 also brings Xbox gaming to the PC.

Windows 10 Home edition is the consumer-focused desktop version that includes a broad range of Universal Windows Apps, such as Photos, Maps, Mail, Calendar, and Groove Music. Windows 10 Pro edition is the desktop version for small businesses, whereas Windows 10 Enterprise edition is the desktop version for large organizations. Windows 10 Education edition builds on the Enterprise edition to meet the needs of schools. The table below shows the features in Windows 10 and, as you can see, some of the features are specific to certain editions:

Features	Home	Pro	Enterprise	Education
Customizable Start menu	Y	Y	Y	Y
Windows Defender & Windows Firewall	Y	Y	Y	Y
Fast start with Hiberboot & InstantGo	Y	Y	Y	Y
TPM support	Y	Y	Y	Y
Battery Saver	Y	Y	Y	Y
Windows Update	Y	Y	Y	Y
Cortana Personal Digital Assistant	Y	Y	Y	Y
Windows Hello login	Y	Y	Y	Y
Virtual desktops	Y	Y	Y	Y
Snap Assist	Y	Y	Y	Y
Continuum Tablet & Desktop Modes	Y	Y	Y	Y
Microsoft Edge	Y	Y	Y	Y
Device Encryption	Y	Y	Y	Y
Domain Join	-	Y	Y	Y
Group Policy Management	-	Y	Y	Y
BitLocker	-	Y	Y	Y
Enterprise Mode Internet Explorer	-	Y	Y	Y
Assigned Access 8.1	-	Y	Y	Y
Remote Desktop	-	Y	Y	Y
Client Hyper-V	-	Y	Y	Y
Direct Access	-	Y	Y	Y
Windows To Go Creator	-	-	Y	Y

cont'd

Features	Home	Pro	Enterprise	Education
AppLocker	-	-	Y	Y
Branch Cache	-	-	Y	Y
Start Screen Control with Group Policy	-	-	Y	Y
Side-loading Line of Business Apps	Y	Y	Y	Y
Mobile Device Management	Y	Y	Y	Y
Join Azure Active Directory	-	Y	Y	Y
Business Store for Windows 10	-	Y	Y	Y
Granular UX Control	-	-	Y	Y
Easy Upgrade Pro to Enterprise	-	Y	Y	-
Easy Upgrade Home to Education	Y	-	-	Y
Microsoft Passport	Y	Y	Y	Y
Enterprise Data Protection	-	Y	Y	Y
Credential Guard	-	-	Y	Y
Device Guard	-	-	Y	Y
Windows Update for Business	-	Y	Y	Y
Current Branch for Business	-	Y	Y	Y
Long Term Servicing Branch	-	-	Y	-

There are two editions of Windows 10 for smartphones and tablets with a screen size of under 8 inches – Windows 10 Mobile, and Windows 10 Mobile Enterprise.

Windows 10 Mobile edition is designed to deliver the best user experience on smaller touch-centric devices. It provides the same universal Windows Apps that are included in the versions for PCs and larger tablets. In addition, Windows 10 Mobile enables some new devices to take advantage of Continuum for Phone – so you can use your phone like a PC when connected to a larger screen. Windows 10 Mobile Enterprise edition is designed for businesses, so has extra security and mobile device management capabilities.

There are also special versions of Windows 10 Enterprise and Windows 10 Mobile Enterprise for industry devices, such as ATMs, retail point of sale, handheld terminals, and robotics, plus Windows 10 IoT Core for smaller devices, such as gateways.



Windows 10 is available in 111 languages!



You need to have a Microsoft account to sign in to OneDrive.



By default, you get 5GB of free OneDrive storage space with Windows 10 (the free allowance was reduced from 15GB in January 2016). This is an excellent way to back up your important documents, since they are stored away from your computer. For up-to-date information on plan allowances and pricing visit <https://onedrive.live.com/about/plans/>



You can log in to access OneDrive with any web browser. Visit onedrive.live.com

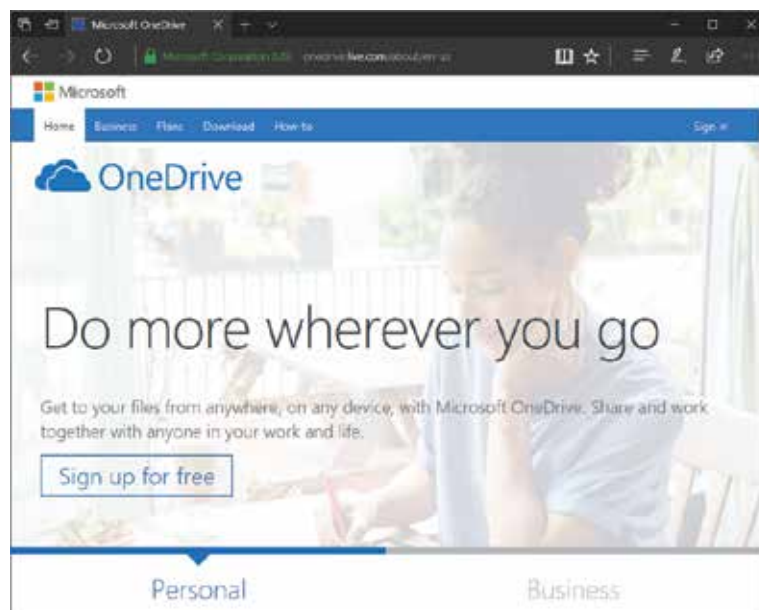
Microsoft OneDrive

A very important function built in to Windows 10 is its ability to utilize what is commonly known as “The Cloud”. Essentially, cloud computing is a technology that uses the internet and centralized remote servers to maintain data and applications. It allows consumers and businesses to use applications they don’t own, and to access their personal files on any computer that has internet access. The technology enables much more efficient computing by centralizing data storage, processing and bandwidth.

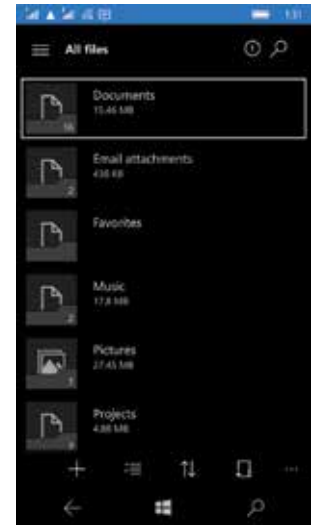
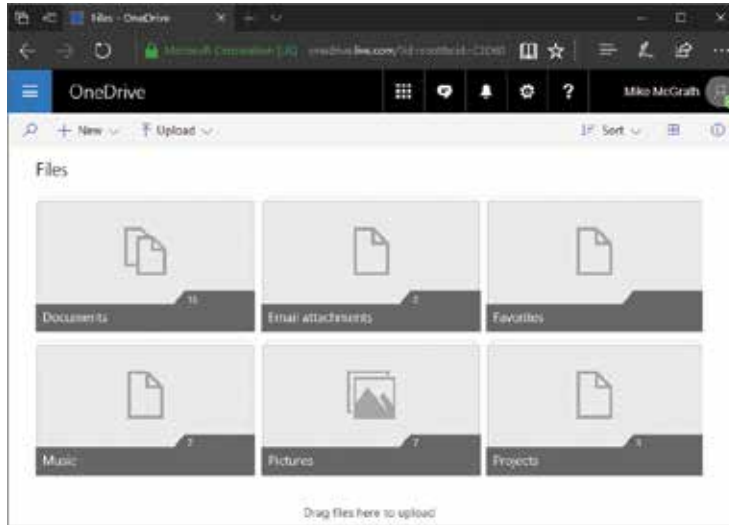
So how do you get into the Cloud? There are actually several ways: One is to open an account with a dedicated service such as Dropbox. You will be given a free amount of storage space; 2GB initially (which can be increased to 18GB by referring friends), in which you can store virtually anything you choose to. If you need more, you will be charged a fee depending on the amount required.

A second way is to buy a product from a major software manufacturer. A typical example is True Image from Acronis – a data backup program. Buy this, and you are given 250GB of online storage that enables you to create Cloud-based backups.

A third way is courtesy of Microsoft OneDrive, which can be accessed online. OneDrive is basically a portal that allows you to access 5GB of free online storage.



...cont'd



Once logged in, you will see that OneDrive has started you off with a number of pre-configured folders. Windows 10 is supplied configured to automatically synchronize these folders on OneDrive. You can delete these folders, rename them, create more folders, nest folders within folders, and upload/download files.

Once uploaded, your data can be accessed from any smartphone, tablet or PC, from anywhere in the world and at any time. You can also access and upload data from within programs in Microsoft's Essentials suite of applications, and Microsoft Office.

One of the coolest features of OneDrive is that it enables online sharing and collaboration. For example, you can share your holiday snaps with friends and family regardless of where they are, while business applications provide access to documents while on the move or sharing documents between offices.

A key aspect of OneDrive is that it enables data to be synchronized across a range of devices. For example, emails on your PC can be automatically loaded onto your smartphone or tablet, and vice versa. You can also synchronize various settings such as personalization, e.g. desktop background, theme, colors, passwords, app settings, and many more. This enables users to maintain the computing environment they are comfortable with across all their computing devices.

OneDrive on Windows 10 Home (above left) and on Windows 10 Mobile (above).



If you access OneDrive directly from a browser, you will have a "lite" version of Microsoft Office with which to create documents while online.



Miracast is a Wireless Display (WiDi) technology your PC can use to project its screen onto any TV that supports Miracast.



Cortana and the Groove Music app are new features in Windows 10.



You must use the same Microsoft account on your PC, phone, and tablet to automatically synchronize your content across these devices.

Windows 10 connectivity

Windows 10 is terrific at connecting all your devices – whether it's a 3-year-old printer or projecting to your brand new TV with Miracast. Windows 10 is built on a common core and includes Universal Windows Apps, so people using Windows 10 for both their PC and smartphone devices will get an optimal, seamless experience as they transition between devices throughout the day.

Microsoft recognizes that many people also use iPhone, iPad or Android devices but want to ensure their Windows 10 content remains available to them across all the devices they own, regardless of the operating system. So Microsoft has produced a number of apps for Android, iPad and iPhone devices to make them work great with a Windows 10 PC.

So, whatever the operating system, this means that all your files and content can be magically available on your PC and phone:

- With the Cortana app on your phone you can have your Personal Digital Assistant always available.
- With the OneDrive app on your phone, every photo you take shows up automatically on your phone and Windows 10 PC.
- With the Groove Music app you can access and play your music from OneDrive on your phone or Windows 10 PC.
- With the OneNote app on your phone, any note you write on your Windows 10 PC will show up on your phone – and any note you write on your phone will show up on your PC.
- With the Skype app on your phone you can make video calls and messages – free over Wi-Fi.
- With Word, Excel, and PowerPoint apps on your phone you can work on Office documents without moving files around.
- With the Outlook app on your phone you can get your email messages and calendar reminders everywhere.

To help people figure out how to make everything work together, the Microsoft Phone Companion app, which is available free from the Windows Store, will help you connect your Windows 10 PC to your phone or tablet.

...cont'd



- 1 The Phone Companion app begins by asking you to pick which type of device you have – here, **Android** is chosen
- 2 Next, the app asks you to pick which app you would like to install on the selected device – here, **OneNote** is chosen



- 3 Now, you are asked to sign in with a Microsoft account, if you are not already signed in to the PC with a Microsoft account

- 4 You are then given the opportunity to send an email containing a link to the chosen app

- 5 After opening the email on the chosen device the link will allow you to install the chosen app



With a Windows phone nothing else is needed – the apps are already installed on that device.



The Phone Companion app and support for other operating system connectivity is new for Windows 10.



You can, of course, search for the OneNote app on Google Play, but the Phone Companion app makes life simpler.



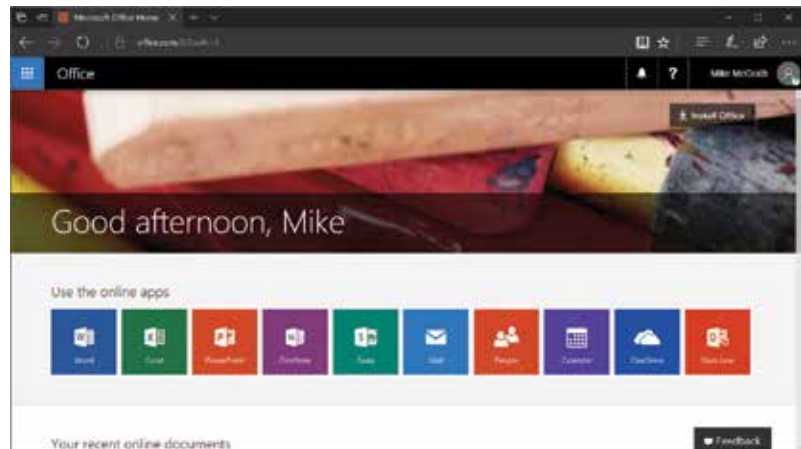
You will need a Microsoft account to sign in to Office Online apps.

Microsoft Office Online

Microsoft Office is a very important application for many people, so here we will take a brief look at Microsoft Office Online and see how it fits in with Windows 10.

Office Online includes the core apps: Word, Excel, PowerPoint, Outlook and OneNote for both PC and touchscreen. Your completed documents, spreadsheets, and presentations can be saved online in your OneDrive for easy access or sharing. Alternatively, they can be downloaded to your computer and saved as a local file – just as you would with an installed app.

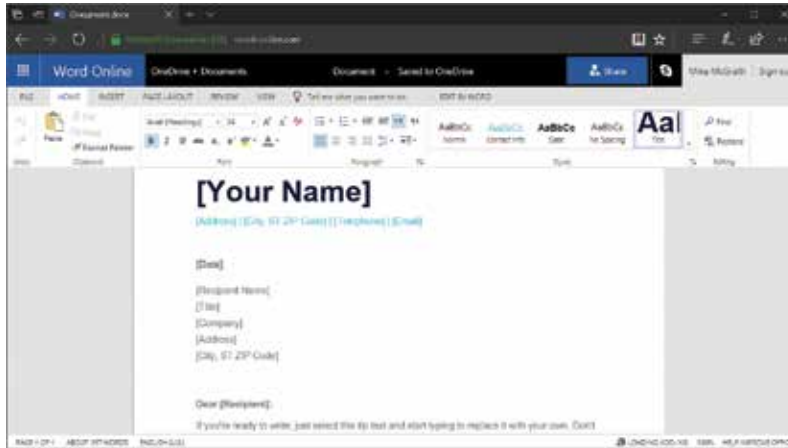
- 1 Open the Microsoft Edge web browser and navigate to office.live.com/start/default.aspx
- 2 Click the **Sign in** button at the top-right of the page then type the email address for your Microsoft account



Other versions of Office can be compared at products.office.com/en-us/compare-all-microsoft-office-products

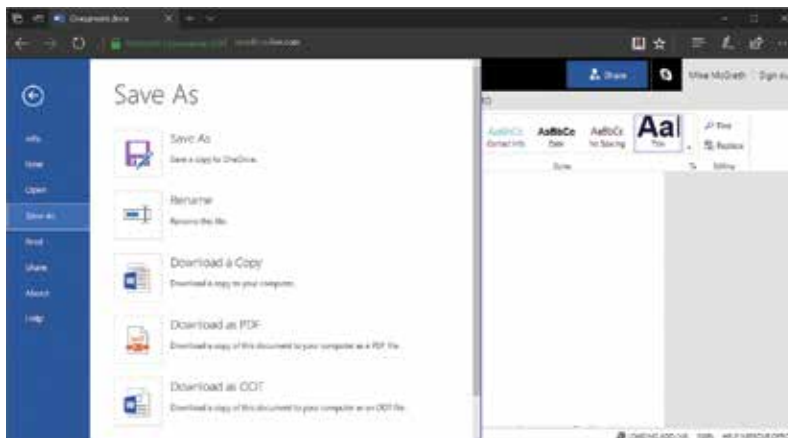
- 3 Choose the online app you wish to use. For example, choose the **Word** app to create a cover letter
- 4 When the Word app opens in the browser, you are presented with a number of ready-made templates. Choose the **Simple cover letter** template

...cont'd



The Start menu in Windows 10 includes a **Get Office** item that makes it easy to start using Office apps.

- 5 Edit the template to suit your requirements by inserting your name and address details, etc.
- 6 When you are happy with the letter, click the **FILE** tab at the top-left of the window
- 7 Now, choose where you would like to save the letter and in what document format



Use the **Rename** option before saving unless you are happy to use the automatically assigned default name.

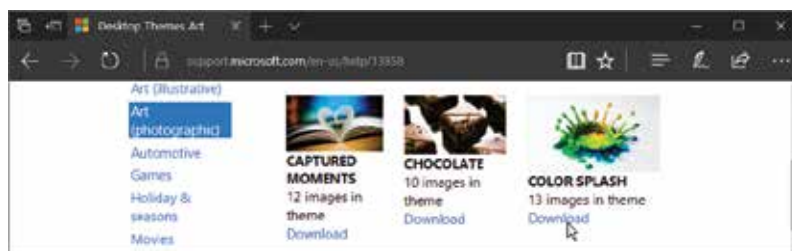


Other free Microsoft downloads are available at this website, such as desktop wallpapers and language packs.

Windows freebies

Microsoft knows we all like to get something for nothing so they offer free theme downloads with which to personalize your PC. These are available at support.microsoft.com/en-us/help/17777/downloads-for-windows and are divided into categories of interest, such as “Art (photographic)”. To grab a free theme:

- 1 Select the **Themes** link then choose a category from the list on the left of the themes page
- 2 Scroll through the list to choose a theme, then click its **Download** link to get the “themepack” file



- 3 When the download completes you will find the themepack file in your **Downloads** folder
- 4 Right-click on the themepack file and choose **Open** to install that theme on your PC



You can change or uninstall themes at any time from Settings, Personalization, Themes. See page 99-106 for more information on themes.

