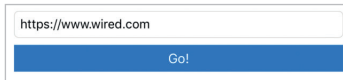
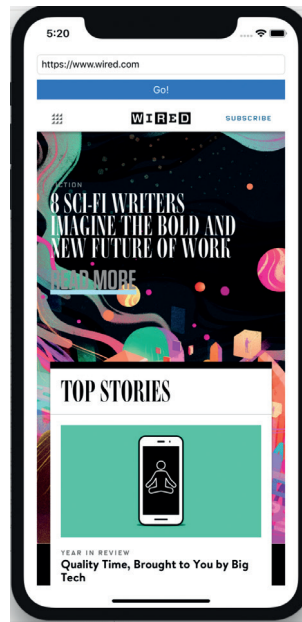
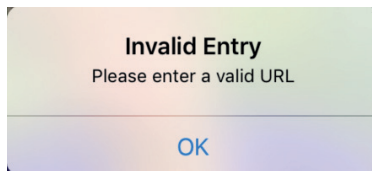


...cont'd

When you type another URL and press **Go!**, the app will look similar to the screenshot (right). In this example, the Wired website is shown inside the web view after **https://www.wired.com** is typed into the text field and **Go!** has been touched.



If you leave the text field blank and try to press **Go!**, then the Invalid Entry message box will appear.



You will need to type the full address including **https://**.

### WebKit framework error

If you experience a crash while running your project, then you will need to add the WebKit framework inside Build Phases.

- 1 Select your project from the top of the Project Navigator



- 2 Select **Build Phases** along the top

- 3 Click the + button underneath **Link Binary with Libraries**



- 4 Type in "WebKit" and WebKit.framework should appear in the list. Select it, and click **Add**

